



**TEREX CRANES, INC.**

P/N 3232U1328

**T750**

**CRANE RATING MANUAL**

**75 U.S. TON**

**HYDRAULIC CRANE**

**9700 LB TOTAL COUNTERWEIGHT**

Terex Cranes, Inc.  
Highway 501 East / P.O. Box 260002  
Conway, SC 29528

3232U1312\_B

# DEFINITIONS

1. RATED LIFTING CAPACITY: THE TOTAL SUSPENDED LOAD, INCLUDING THE WEIGHT OF MATERIAL AND LOAD HANDLING EQUIPMENT, THAT THE MACHINE CAN SAFELY LIFT UNDER IDEAL CONDITIONS AT A GIVEN BOOM LENGTH, BOOM ANGLE AND LOAD RADIUS.
2. LOAD RADIUS: THE HORIZONTAL DISTANCE MEASURED BETWEEN THE CENTER OF ROTATION AND THE HOIST LOAD LINE OR TACKLE WITH LOAD APPLIED.
3. LOADED BOOM ANGLE: THE ANGLE BETWEEN THE LONGITUDINAL CENTERLINE OF THE BOOM BASE SECTION AND THE HORIZONTAL AFTER LIFTING THE RATED LOAD AT THE RATED LOAD RADIUS.
4. BOOM POINT ELEVATION: THE VERTICAL DISTANCE MEASURED BETWEEN THE GROUND AND THE BOOM POINT SHEAVE.
5. FREELY SUSPENDED LOAD: LIFTED LOAD HANGING FREE WITH NO DIRECT EXTERNAL FORCE APPLIED EXCEPT BY THE HOIST LINE.
6. SIDE LOAD: HORIZONTAL FORCE APPLIED TO THE LIFTED LOAD EITHER ON THE GROUND OR IN THE AIR.
7. WORK AREAS: AREA MEASURED IN A CIRCULAR ARC ABOUT THE CENTER LINE OF ROTATION AS SHOWN IN THE AREA OF OPERATION DIAGRAM.
8. FULLY EXTENDED OUTRIGGERS: ALL OUTRIGGER BEAMS EXTENDED TO MAXIMUM SPREAD, AND WITH ALL FLOATS DOWN AND SET.
9. MID POSITION OUTRIGGERS: ALL OUTRIGGER BEAMS EXTENDED FULLY TO THE MID POSITION POSITIVE STOPS AND WITH ALL FLOATS DOWN AND SET.
10. RETRACTED OUTRIGGERS: ALL OUTRIGGER BEAMS NOT EXTENDED AND ALL FLOATS DOWN AND SET.

# WARNING

THIS MACHINE MEETS THE REQUIREMENTS OF ANSI B30.5; PCSA #4. UPPER, LOWER, BOOM AND JIB STRUCTURES HAVE BEEN TESTED PER SAE J-1063. MACHINE STABILITY HAS BEEN TESTED PER SAE J-765. THIS MACHINE ALSO CONFORMS TO THE REQUIREMENTS OF THE OCCUPATIONAL SAFETY AND HEALTH ADMINISTRATION (OSHA), UNITED STATES DEPARTMENT OF LABOR, IN EFFECT AT THE TIME OF MANUFACTURE.

CRANE LIFTING CAPACITIES SHOWN ARE FOR THIS MACHINE AS ORIGINALLY MANUFACTURED AND EQUIPPED BY TEREX CRANES, INC. THE LIFTING CAPACITIES ONLY APPLY WHEN ALL THE INSTRUCTIONS IN THIS BOOK ARE RIGIDLY FOLLOWED. MODIFICATIONS TO THIS MACHINE OR USE OF EQUIPMENT OTHER THAN THAT SPECIFIED CAN RESULT IN A REDUCTION OF CAPACITY.

IF IMPROPERLY OPERATED OR MAINTAINED, THIS MACHINE CAN BE HAZARDOUS. OPERATION AND MAINTAINANCE OF THIS MACHINE MUST BE IN COMPLIANCE WITH THE INFORMATION IN THE OPERATORS, SHOP, PARTS AND SAFETY MANUALS FURNISHED. IF THESE MANUALS ARE MISSING, OBTAIN REPLACEMENTS THROUGH TEREX CRANES, INC.

REDUCED CRANE LIFTING CAPACITIES FOR THE PARTICULAR JOB SHALL BE ESTABLISHED BY THE USER WITH DUE ALLOWANCE FOR ADVERSE OPERATING CONDITIONS. THESE CONDITIONS INCLUDE THE SUPPORTING SURFACE, PENDULUM ACTION OF THE LOAD, JERKING OR SUDDEN STOPS OF THE LOAD AND OTHER FACTORS AFFECTING STABILITY, TWO MACHINE LIFTS, ELECTRICAL WIRES, ADVERSE WEATHER, WIND, HAZARDOUS SURROUNDINGS, EXPERIENCE OF PERSONNEL, ETC.

CRANE LIFTING CAPACITIES ARE BASED ON FREELY SUSPENDED LOADS WITH THE MACHINE LEVELED AND STANDING ON A FIRM UNIFORM SUPPORTING SURFACE. DEPENDING ON THE NATURE OF THE SUPPORTING SURFACE, IT MAY BE NECESSARY TO HAVE STRUCTURAL SUPPORTS UNDER THE OUTRIGGER FLOAT TO DISTRIBUTE THE FLOAT LOAD AND INSURE THAT GROUND BEARING CAPACITY OF THE SUPPORTING SURFACE IS NOT EXCEEDED. NO ATTEMPT SHALL BE MADE TO MOVE A LOAD HORIZONTALLY ON THE GROUND IN ANY DIRECTION.

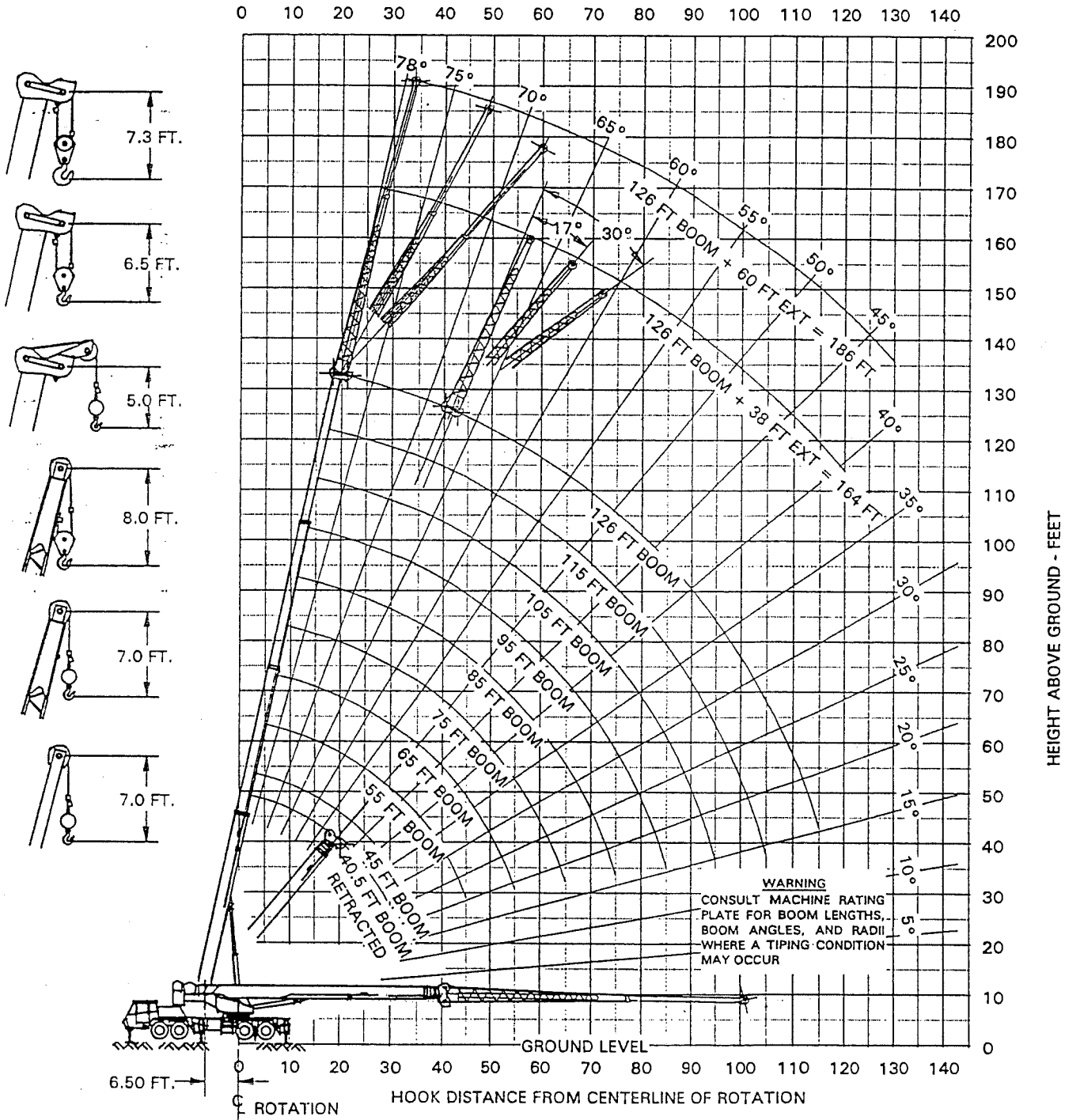
SIDE LOADING OF THE MACHINE AND LOAD SWING OUT MAY CAUSE STRUCTURAL FAILURE OR MACHINE TIP-OVER. SIDE LOADS MAY BE GENERATED BY: LIFTING WHEN NOT LEVEL; SWINGING WHEN NOT LEVEL; DRAGGING A LOAD; SUDDEN ACCELERATING OR DECELERATION IN SWINGING; WIND FORCES ON LOAD AND BOOM STRUCTURE; PUSHING A LOAD.



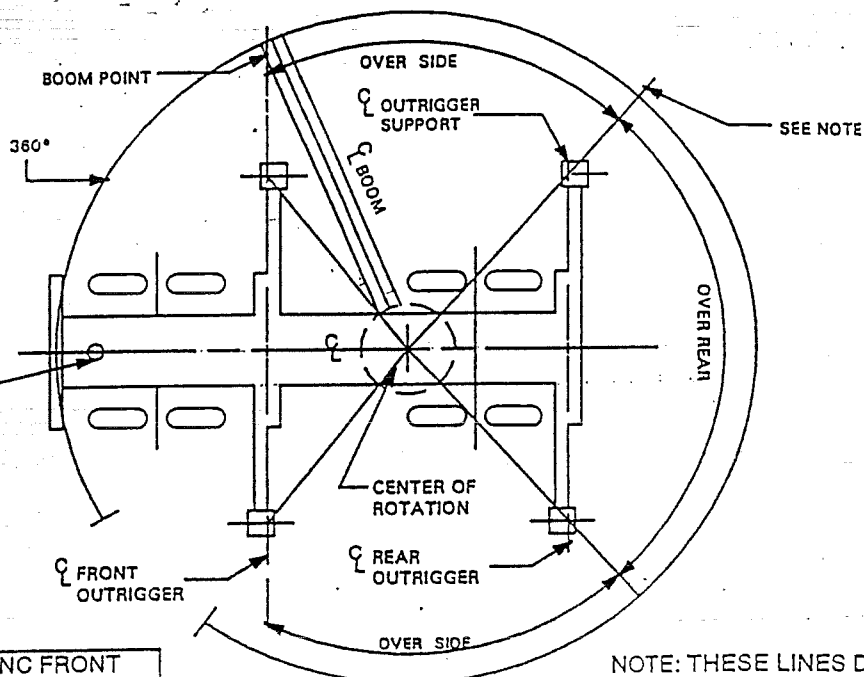
# WARNING

7. LOADED BOOM ANGLES AT SPECIFIED BOOM LENGTHS GIVE ONLY AN APPROXIMATION OF THE OPERATING RADIUS. THE BOOM ANGLE BEFORE LOADING SHOULD BE GREATER TO ACCOUNT FOR BOOM DEFLECTION INCREASING THE RADIUS AS THE LOAD IS LIFTED.
8. POWERED BOOM SECTIONS MUST BE EXTENDED AND RETRACTED EQUALLY.
9. RATED LIFTING CAPACITIES ARE BASED ON CORRECT REEVING. DEDUCTION MUST BE MADE FOR EXCESSIVE REEVING. ANY REEVING OVER THE MINIMUM REQUIRED (SEE WIRE ROPE STRENGTH TABLE) IS CONSIDERED EXCESSIVE AND MUST BE ACCOUNTED FOR. USE WORKING RANGE DIAGRAM TO ESTIMATE THE EXTRA FEET (METERS) OF WIRE ROPE THEN DEDUCT 1 POUND FOR EACH FOOT (1.5 Kg FOR EACH METER) OF EXCESSIVE WIRE ROPE BEFORE ATTEMPTING TO LIFT A LOAD.
10. POSITIONING OR OPERATING AT A RADIUS OR BOOM LENGTH BEYOND THE MAXIMUMS OR MINIMUMS SHOWN, IS NEITHER INTENDED OR APPROVED.
11. WHEN EITHER BOOM LENGTH OR RADIUS OR BOTH ARE BETWEEN VALVES LISTED, THE NEXT SMALLEST RATED LIFTING CAPACITY AT EITHER THE NEXT LARGER OR NEXT LONGER OR SHORTER BOOM LENGTH SHALL BE USED.
12. POSITIONING OR OPERATION OF LATTICE EXTENSION OR JIB AT BOOM ANGLES BEYOND THE MAXIMUMS OR MINIMUMS SHOWN IS NEITHER INTENDED OR APPROVED.
13. IT IS SAFE TO ATTEMPT TO TELESCOPE ANY LOAD WITHIN THE LIMITS OF THE RATING CHART. THE MAXIMUM LOAD WHICH MAY BE TELESCOPED IS LIMITED BY HYDRAULIC PRESSURE, BOOM ANGLE AND POWERED BOOM SECTIONS LUBRICATION.

# RANGE DIAGRAM T750 126' FULL POWER BOOM



# AREAS OF OPERATION -OUTRIGGERS- ON OUTRIGGERS" WORK AREA



WHEN HYDRAULING FRONT  
TABILIZER IS SET, "OVER SIDE"  
RATINGS ARE APPLICABLE TO  
"OVER FRONT"  
AREA OF OPERATION.

NOTE: THESE LINES DETERMINE THE  
LIMITING POSITION OF ANY LOAD FOR  
OPERATING WITHIN WORKING AREAS  
INDICATED.

2080 MAIN & AUXILIARY HOIST REEVING 6 X 37										
.75 INCH (19 mm) DIA. ROPE BREAKING STRENGTH 58800 LB. (26600 KG)										
PORTS OF LINE	1	2	3	4	5	6	7	8	9	10
MAXIMUM LOAD-LBS.	15000	30000	45000	60000	75000	90000	105000	120000	135000	150000
MAXIMUM LOAD-KGS.	6800	13600	20400	27200	34000	40800	47600	54400	61200	68100

1580 AUXILIARY HOIST REEVING 6 X 37										
.75 INCH (19 mm) DIA. ROPE BREAKING STRENGTH 58800 LB. (26600 KG)										
PORTS OF LINE	1	2	3	4	5	6	7	8	9	10
MAXIMUM LOAD-LBS.	11000	22000	33000	44000	55000	66000	77000	88000	99000	110000
MAXIMUM LOAD-KGS.	5000	10000	15000	20000	25000	30000	35000	40000	45000	50000

HOIST REEVING 8 X 19 ROTATION RESISTANT										
.75 INCH (19 mm) DIA. ROPE BREAKING STRENGTH 51800 LB. (23500 KG)										
PORTS OF LINE	1	2	3	4	5	6	7	8	9	10
MAXIMUM LOAD-LBS.	10350	20700	31050	41400	51750	62100	72450	82800	93150	103500
MAXIMUM LOAD-KGS.	4600	9300	14000	18700	23400	28100	32800	37500	42200	46900

# OPERATION ON OUTRIGGERS

1. READ AND UNDERSTAND ALL WARNINGS AND INSTRUCTIONAL NOTES.
2. RATED LOADS FOR FULLY EXTENDED OUTRIGGERS DO NOT EXCEED 85% OF THE TIPPING LOAD AS DETERMINED BY SAE CRANE STABILITY TEST CODE J765.
3. THE TIRES SHALL BE RAISED CLEAR OF THE GROUND AND FREE OF CRANE WEIGHT BEFORE OPERATING BOOM OR LIFTING LOADS.
4. ALL OUTRIGGER BEAMS MUST BE EXTENDED TO THE SAME LENGTH; FULLY EXTENDED, MID POSITION OR FULLY RETRACTED.
5. RATED LIFTING CAPACITIES ABOVE THE BOLD LINE ARE BASED ON THE MACHINE'S HYDRAULIC OR STRUCTURAL COMPETENCE AND NOT ON MACHINE STABILITY. RATED LIFTING CAPACITIES BELOW THE BOLD LINE ARE BASED ON THE MACHINE'S STABILITY.
6. RATED LIFTING CAPACITIES INCLUDE THE WEIGHT OF HOOK BLOCK, SLINGS AND AUXILIARY LIFTING DEVICES. THEIR WEIGHT MUST BE SUBTRACTED FROM THE LISTED RATED LIFTING CAPACITY TO OBTAIN THE NET LOAD TO BE LIFTED.
7. WHEN LIFTING OVER THE LATTICE EXTENSION THE WEIGHT OF ANY HOOK BLOCK, SLINGS, AND AUXILIARY LIFTING DEVICES AT THE MAIN BOOM HEAD MUST BE ADDED TO THE LOAD
8. WHEN THE LATTICE EXTENSION IS ERECTED BUT UNUSED ADD THREE (3) TIMES THE WEIGHT OF ANY HOOK BLOCK, SLINGS, AND AUXILIARY LIFTING DEVICES AT THE EXTENSION HEAD TO THE LOAD. OUTRIGGERS MUST BE IN THE FULLY EXTENDED POSITION WHEN LIFTING AT THE MAIN BOOM HEAD WITH THE LATTICE EXTENSION ERECTED.
9. ADD 150LB TO THE CHART VALUES IF THE AUXILIARY BOOM HEAD SHEAVE IS NOT ERECTED.

# OPERATION ON OUTRIGGERS

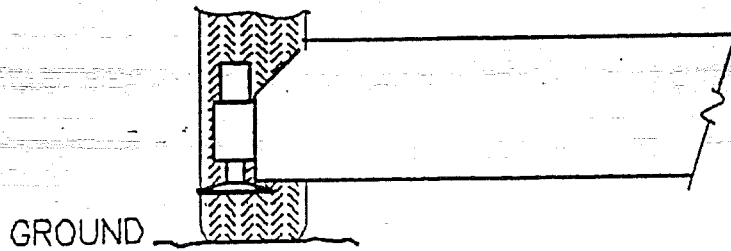
10. EXTENSION RATED LIFTING CAPACITY IS BASED ON LOADED MAIN BOOM ANGLE WITH REFERENCE TO HORIZONTAL, REGARDLESS OF MAIN BOOM LENGTH. REFERENCE RADIUS IS FOR FULLY EXTENDED MAIN BOOM. FOR ANGLES NOT SHOWN, USE THE NEXT LOWER BOOM ANGLE TO DETERMINE THE ALLOWABLE CAPACITY.
11. DO NOT TIP MACHINE TO DETERMINE ALLOWABLE LIFTING CAPACITIES.
12. HANDLING OF PERSONNEL IS NOT PERMITTED UNLESS IT IS THE LEAST HAZARDOUS WAY TO COMPLETE THE JOB.  
HANDLING OF PERSONNEL IS ONLY PERMITTED IN ACCORDANCE WITH THE TEREX CRANES INC POLICY GUIDE AND OSHA 1926-550.
13. USE OF PILE DRIVING/EXTRACTING EQUIPMENT IS APPROVED UNDER THE LIMITATIONS AND OPERATING REQUIREMENTS STATED IN TEREX CRANES INC. "PILE DRIVING/EXTRACTING POLICY" GUIDE.



# OPERATION ON TIRES

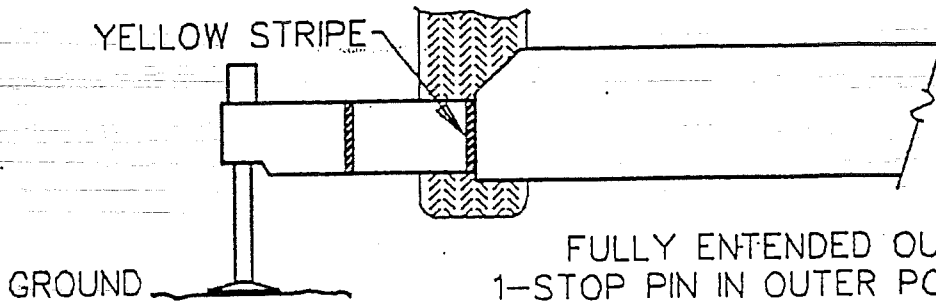
1. READ AND UNDERSTAND ALL WARNINGS AND INSTRUCTIONAL NOTES.
2. CRANE LIFTING CAPACITIES ON TIRES DO NOT EXCEED 75% OF THE TIPPING LOAD.
3. CRANE LIFTING CAPACITIES ON TIRES DEPEND ON TIRE CAPACITY, CONDITION OF THE TIRES AND TIRE AIR PRESSURE. TIRES MUST BE INFLATED TO THE RECOMMENDED PRESSURE BEFORE LIFTING.
4. CRANE LIFTING CAPACITIES REQUIRE LIFTING FROM MAIN BOOM HEAD ONLY ON A SMOOTH AND LEVEL SURFACE.
5. RATED LIFTING CAPACITIES ABOVE THE BOLD LINE ARE BASED ON THE MACHINE'S HYDRAULIC OR STRUCTURAL COMPETENCE AND NOT ON MACHINE STABILITY. RATED LIFTING CAPACITIES BELOW THE BOLD LINE ARE BASED ON THE MACHINE'S STABILITY.
6. RATED LIFTING CAPACITIES INCLUDE THE WEIGHT OF HOOK BLOCK, SLINGS AND AUXILIARY LIFTING DEVICES. THEIR WEIGHT MUST BE SUBTRACTED FROM THE LISTED RATED LIFTING CAPACITY TO OBTAIN THE NET LOAD TO BE LIFTED.
7. ADD 150LB TO THE CHART VALUES IF THE AUXILIARY BOOM HEAD SHEAVE IS NOT ERECTED.
8. FOR PICK AND CARRY OPERATIONS, THE BOOM MUST BE CENTERED OVER THE REAR OF THE MACHINE, THE MECHANICAL SWING LOCK ENGAGED AND THE LOAD MUST BE RESTRAINED FROM SWING.
9. DO NOT TRAVEL WITH BOOM EXTENSION ERECTED.
10. CREEP: MOTION LESS THAN 200 FEET (60 METERS) IN A 30 MINUTE PERIOD AND NOT EXCEEDING 1 MPH (1.6 KM/H).
11. MAXIMUM RECOMMENDED BOOM ANGLE ON TIRES IS 73° WITHOUT LOAD.
12. LIFTING LOADS WITH ERECTED BOOM EXTENSION IS NEITHER INTENDED NOR APPROVED.
13. HANDLING OF PERSONNEL FROM THE BOOM IS NEITHER INTENDED NOR APPROVED.
14. OPERATING PILE DRIVING/EXTRACTING EQUIPMENT ON TIRES IS NEITHER INTENDED NOR APPROVED.

LIFTING ON TIRES - OUTRIGGERS NOT IN USE

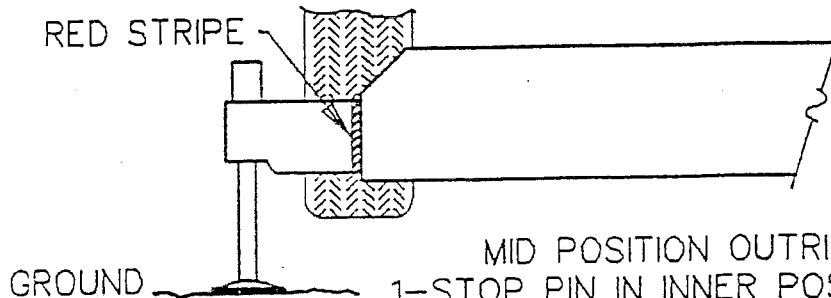


1-LIFTING CAPACITIES, SECTION 3 APPLY.

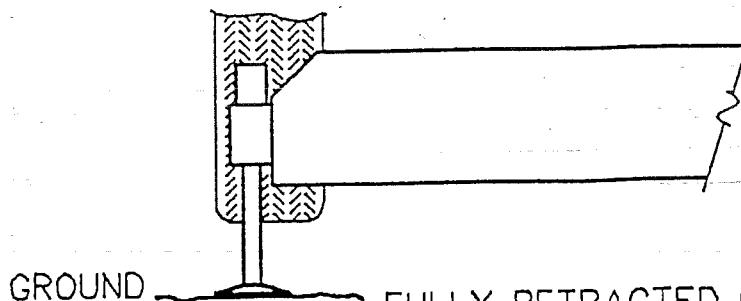
LIFTING ON OUTRIGGERS - TIRES CLEAR OF GROUND



FULLY EXTENDED OUTRIGGERS  
 1-STOP PIN IN OUTER POSITION  
 2-OUTRIGGER CYLINDER FULLY EXTENDED  
 3-YELLOW STRIPE SHOWING  
 4-LIFTING CAPACITIES, SECTION 4 APPLY



MID POSITION OUTRIGGERS  
 1-STOP PIN IN INNER POSITION  
 2-OUTRIGGER CYLINDER EXTENDED TO STOP  
 3-RED STRIPE SHOWING  
 4-LIFTING CAPACITIES, SECTION 5 APPLY



FULLY RETRACTED OUTRIGGERS  
 1-OUTRIGGER CYLINDER FULLY RETRACTED  
 2-NO STRIPE SHOWING  
 3-LIFTING CAPACITIES, SECTION 6 APPLY

## HOOK BLOCK WEIGHTS

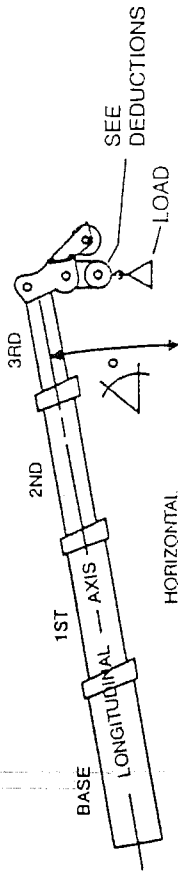
9.6 TON BALL HOOK	476 POUNDS
20 TON 1 SHEAVE HOOK BLOCK	420 POUNDS
75 TON 5 SHEAVE HOOK BLOCK	1174 POUNDS

8.7 M TON BALL HOOK	213 Kg
18.1 M TON 1 SHEAVE HOOK BLOCK	190 Kg
69 M TON 5 SHEAVE HOOK BLOCK	533 Kg

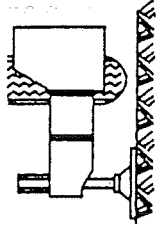
NOTE: These weights apply only to TEREX CRANES, Inc  
supplied equipment.

# RATED LIFTING CAPACITIES IN POUNDS

40.5 - 126FT BOOM ON FULLY EXTENDED OUTRIGGERS - OVER REAR  
 9700 POUND TOTAL COUNTERWEIGHT  
 LOAD MOMENT DEVICE (LMI) CODE # 04



SEE DEDUCTIONS



## POWERED BOOM LENGTH IN FEET

LOAD RADIUS FT.	40.5FT		45FT		55FT		65FT		75FT		85FT		95FT		105FT		115FT		126FT		LOAD RADIUS FT.	
	LOADED BOOM ANGLE X°	LOAD, LB REAR	LOADED BOOM ANGLE X°	LOAD, LB REAR	LOADED BOOM ANGLE X°	LOAD, LB REAR	LOADED BOOM ANGLE X°	LOAD, LB REAR	LOADED BOOM ANGLE X°	LOAD, LB REAR	LOADED BOOM ANGLE X°	LOAD, LB REAR	LOADED BOOM ANGLE X°	LOAD, LB REAR	LOADED BOOM ANGLE X°	LOAD, LB REAR	LOADED BOOM ANGLE X°	LOAD, LB REAR	LOADED BOOM ANGLE X°	LOAD, LB REAR		
10	68	150000	71	102000	74	95000															10	
12	65	116000	68	100000	72	94700	75	77800														12
15	60	92500	64	91700	69	89000	73	73200	75	61000												15
20	51	69600	56	69500	63	69000	68	64000	71	55700	74	48200	76	40000								20
25	41	55600	48	55200	57	54600	63	54000	67	48500	70	42200	73	36300	75	31600						25
30	28	44500	38	44700	50	45100	58	45000	63	44500	67	39000	70	32400	72	28800	74	25400				30
35			25	36000	43	35800	52	35400	58	35000	63	33400	67	29500	69	25800	72	23100	74	20500		35
40					34	28300	46	28000	54	27800	59	27200	63	26700	66	23200	69	21000	72	18800		40
45					22	23300	39	23700	49	23100	55	22500	60	21900	63	21000	66	19200	69	17100		45
50							31	19400	43	19700	50	19800	56	18900	60	18400	64	17500	67	15700		50
55							21	16200	37	16400	46	16500	52	16800	57	16700	61	16000	64	14800		55
60									29	13700	40	13900	48	14200	53	14100	58	14200	61	13600		60
65									19	11600	35	11700	43	12100	50	12000	54	12000	59	12100		65
70											28	9900	38	10300	46	10200	51	10200	56	10300		70
75											18	8400	33	8800	41	8600	48	8700	53	8800		75
80													26	7500	37	7300	44	7400	50	7500		80
85													17	6300	32	6200	40	6300	46	6300		85
90															25	5200	35	5300	43	5300		90
95															17	4300	30	4400	39	4500		95
100																	30	3600	35	3700		100
110																			25	2300		110

## ZERO DEGREE BOOM ANGLE LOADS (LB) / ( RADII (FT.))

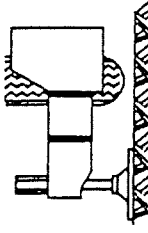
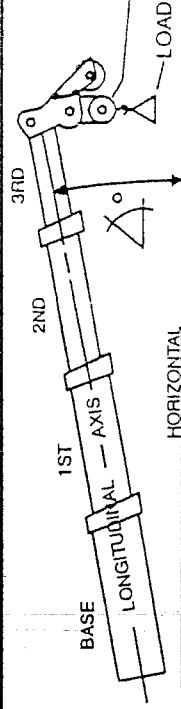
LOAD RADIUS FT.	0	23000 (34.0)	18700 (38.5)	12300 (48.5)	8600 (58.5)	6300 (68.5)	4700 (78.5)	3400 (88.5)	2500 (98.5)	0	0	0	0	0	0	0	0	0	0	0	0	0	

MINIMUM BOOM ANGLE (DEGREES) FOR INDICATED BOOM LENGTH (NO LOAD)  
 MAXIMUM BOOM LENGTH (FEET) AT -2 DEGREE BOOM ANGLE (NO LOAD)

-2	126
----	-----

# RATED LIFTING CAPACITIES IN POUNDS

40.5 - 126FT BOOM ON FULLY EXTENDED OUTRIGGERS - OVER SIDE  
 9700 POUND TOTAL COUNTERWEIGHT  
 LOAD MOMENT DEVICE (LMI) CODE # 04



## POWERED BOOM LENGTH IN FEET

LOAD RADIUS FT.	40.5FT		45FT		55FT		65FT		75FT		85FT		95FT		105FT		115FT		126FT		LOAD RADIUS FT.	
	LOADED BOOM ANGLE X°	LOAD, LB SIDE	LOADED BOOM ANGLE X°	LOAD, LB SIDE	LOADED BOOM ANGLE X°	LOAD, LB SIDE	LOADED BOOM ANGLE X°	LOAD, LB SIDE	LOADED BOOM ANGLE X°	LOAD, LB SIDE	LOADED BOOM ANGLE X°	LOAD, LB SIDE	LOADED BOOM ANGLE X°	LOAD, LB SIDE	LOADED BOOM ANGLE X°	LOAD, LB SIDE	LOADED BOOM ANGLE X°	LOAD, LB SIDE	LOADED BOOM ANGLE X°	LOAD, LB SIDE		
10	68	150000	71	102000	74	95000															10	
12	65	116000	68	100000	72	94700	75	77800														12
15	60	92500	64	91700	69	89000	73	73200	75	61000												15
20	51	69600	56	69500	63	69000	68	64000	71	55700	74	48200	76	40000								20
25	41	55600	48	55200	57	54600	63	54000	67	48500	70	42200	73	36300	75	31600						25
30	28	44500	38	44700	50	45100	58	45000	63	44500	67	39000	70	32400	72	28800	74	25400				30
35			25	34800	43	35400	52	35400	58	35000	63	33400	67	29500	69	25800	72	23100	74	20500		35
40					34	27300	46	27600	54	27800	59	27200	63	26700	66	23200	69	21000	72	18800		40
45					22	21600	39	21900	48	22100	55	22300	60	21900	63	21000	66	19200	69	17100		45
50							31	17700	43	17900	50	18100	56	18300	60	18300	64	17500	67	15700		50
55							21	14400	37	14700	46	14800	52	15100	57	15100	61	15200	64	14800		55
60							29	12100	29	12100	40	12300	48	12600	53	12500	57	12600	61	12700		60
65							19	10000	19	10000	35	10200	43	10500	49	10400	54	10500	58	10600		65
70											28	8400	38	8800	46	8700	51	8700	56	8800		70
75											18	7000	33	7300	41	7200	47	7300	53	7400		75
80													26	6100	37	6000	44	6000	49	6100		80
85													17	5000	31	4900	40	5000	46	5000		85
90															25	3900	35	4000	43	4100		90
95															17	3100	30	3200	39	3300		95
100																	24	2400	35	2500		100

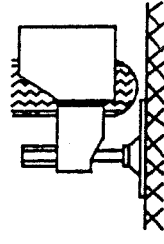
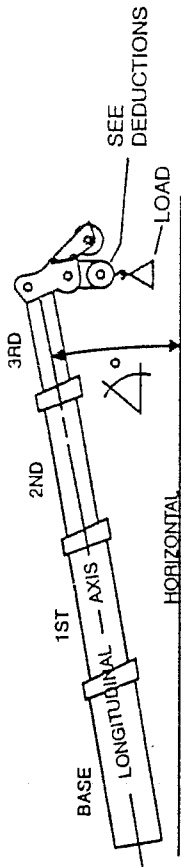
## ZERO DEGREE BOOM ANGLE LOADS (LB) / (RADI) (FT.)

LOAD RADIUS FT.	0	23000 (34.0)	18700 (38.5)	12300 (48.5)	8600 (58.5)	6300 (68.5)	4700 (78.5)	3200 (88.5)	0 (98.5)
10									
12									
15									
20									
25									
30									
35									
40									
45									
50									
55									
60									
65									
70									
75									
80									
85									
90									
95									
100									

MINIMUM BOOM ANGLE (DEGREES) FOR INDICATED BOOM LENGTH (NO LOAD) -2  
 MAXIMUM BOOM LENGTH (FEET) AT -2 DEGREE BOOM ANGLE (NO LOAD) 105

# RATED LIFTING CAPACITIES IN POUNDS

40.5 - 126FT BOOM ON MID POSITION OUTRIGGERS - OVER SIDE/REAR  
 9700 POUND TOTAL COUNTERWEIGHT LOAD MOMENT DEVICE (LMI) CODE # 30



## POWERED BOOM LENGTH IN FEET

LOAD RADIUS FT.	40.5FT		45FT		55FT		65FT		75FT		85FT		95FT		105FT		115FT		126FT			
	LOADED BOOM ANGLE X°	LOAD, LB SIDE/REAR	LOADED BOOM ANGLE X°	LOAD, LB SIDE/REAR	LOADED BOOM ANGLE X°	LOAD, LB SIDE/REAR	LOADED BOOM ANGLE X°	LOAD, LB SIDE/REAR	LOADED BOOM ANGLE X°	LOAD, LB SIDE/REAR	LOADED BOOM ANGLE X°	LOAD, LB SIDE/REAR	LOADED BOOM ANGLE X°	LOAD, LB SIDE/REAR	LOADED BOOM ANGLE X°	LOAD, LB SIDE/REAR	LOADED BOOM ANGLE X°	LOAD, LB SIDE/REAR	LOADED BOOM ANGLE X°	LOAD, LB SIDE/REAR		
10	68	150000	71	102000	74	95000																
12	65	116000	68	100000	72	94700	75	77800														
15	60	90900	64	91300	69	89000	73	73200	75	61000												
20	51	48900	56	49300	63	49800	68	50100	71	50400	74	48200	76	40000								
25	41	31400	47	31700	57	32200	63	32500	67	32700	70	32900	73	33000	75	31600	77	28200				
30	28	21800	38	22100	50	22500	57	22800	63	23000	66	23200	69	23400	72	23400	74	23500	76	22500		
35			25	15900	43	16400	52	16700	58	16900	62	17000	66	17300	69	17300	71	17300	74	17400		
40					34	12200	46	12500	53	12600	58	12800	62	13100	66	13000	68	13100	71	13200		
45					22	9100	39	9400	48	9600	54	9700	59	10000	63	9900	65	10000	68	10100		
50							31	7000	43	7200	50	7300	55	7700	59	7500	63	7600	66	7700		
55							20	5100	36	5300	45	5500	51	5800	56	5700	60	5700	63	5800		
60									29	3800	40	4000	47	4300	52	4200	56	4200	60	4300		
65									19	2500	34	2700	43	3100	49	2900	53	3000	57	3100		

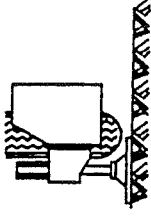
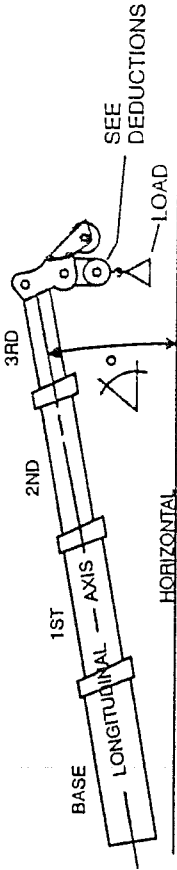
## ZERO DEGREE BOOM ANGLE LOADS (LB) / ( RADI) ( FT. )

0	16500 (34.0)	0	12600 (38.5)	0	7200 (48.5)	0	3900 (58.5)	0	0 (68.5)												
---	--------------	---	--------------	---	-------------	---	-------------	---	----------	--	--	--	--	--	--	--	--	--	--	--	--

MINIMUM BOOM ANGLE (DEGREES) FOR INDICATED BOOM LENGTH (NO LOAD)	-2
MAXIMUM BOOM LENGTH (FEET) AT -2 DEGREE BOOM ANGLE (NO LOAD)	75

# RATED LIFTING CAPACITIES IN POUNDS

40.5 - 126FT BOOM ON RETRACTED OUTRIGGERS - OVER SIDE/REAR  
 9700 POUND TOTAL COUNTERWEIGHT  
 LOAD MOMENT DEVICE (LMI) CODE # 56



## POWERED BOOM LENGTH IN FEET

LOAD RADIUS FT.	40.5FT		45FT		55FT		65FT		75FT		85FT		95FT		105FT		115FT		126FT			
	LOADED BOOM ANGLE X°	LOAD, LB SIDE/REAR	LOADED BOOM ANGLE X°	LOAD, LB SIDE/REAR	LOADED BOOM ANGLE X°	LOAD, LB SIDE/REAR	LOADED BOOM ANGLE X°	LOAD, LB SIDE/REAR	LOADED BOOM ANGLE X°	LOAD, LB SIDE/REAR	LOADED BOOM ANGLE X°	LOAD, LB SIDE/REAR	LOADED BOOM ANGLE X°	LOAD, LB SIDE/REAR	LOADED BOOM ANGLE X°	LOAD, LB SIDE/REAR	LOADED BOOM ANGLE X°	LOAD, LB SIDE/REAR	LOADED BOOM ANGLE X°	LOAD, LB SIDE/REAR		
10	68	79900	70	80200	74	80900																
12	65	55700	68	56100	72	56600	75	57000														
15	60	36700	63	37000	69	37500	72	37800	75	38000												
20	51	21400	56	21600	63	22000	67	22300	71	22500	73	22700	76	22800								
25	41	13400	47	13700	57	14100	62	14300	67	14500	70	14700	72	14900	74	14900						
30	28	8400	38	8800	50	9300	57	9500	62	9700	66	9800	69	10100	71	10000	73	10100				
35			25	5400	43	6000	52	6200	58	6400	62	6500	65	6800	68	6700	70	6800	72	6900		
40					34	3500	46	3900	53	4100	58	4200	62	4500	65	4400	68	4400	70	4500		
45									48	2300	54	2400	58	2800	62	2600	65	2700	67	2700		

## ZERO DEGREE BOOM ANGLE LOADS (LB) / ( RADII ( FT. ))

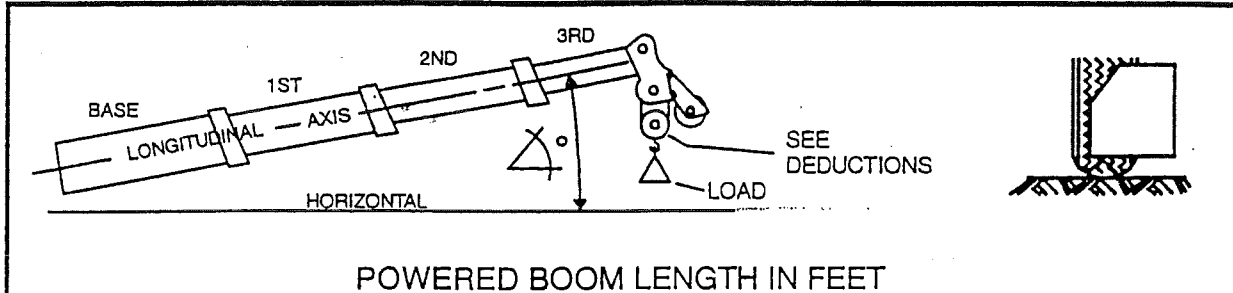
0	5400 (34.0)	0	3500 (38.5)	0	(48.5)																
---	-------------	---	-------------	---	--------	--	--	--	--	--	--	--	--	--	--	--	--	--	--	--	--

MINIMUM BOOM ANGLE (DEGREES) FOR INDICATED BOOM LENGTH (NO LOAD) -2  
 MAXIMUM BOOM LENGTH (FEET) AT -2 DEGREE BOOM ANGLE (NO LOAD) 55

# RATED LIFTING CAPACITIES IN POUNDS

40.5 - 75FT BOOM ON TIRES  
 STATIC - OVER REAR

9700 POUND TOTAL COUNTERWEIGHT  
 LOAD MOMENT DEVICE (LMI) CODE # 02



POWERED BOOM LENGTH IN FEET

LOAD RADIUS FT.	40.5FT		45FT		55FT		65FT		75FT		LOAD RADIUS FT.
	LOADED BOOM ANGLE X°	LOAD, LB	LOADED BOOM ANGLE X°	LOAD, LB	LOADED BOOM ANGLE X°	LOAD, LB	LOADED BOOM ANGLE X°	LOAD, LB	LOADED BOOM ANGLE X°	LOAD, LB	
		REAR		REAR		REAR		REAR		REAR	
10	68	38800	70	38600	74	38100					10
12	65	35300	68	35000	72	34500	75	34000			12
15	60	30000	63	29800	69	29400	72	29000	75	28500	15
20	51	23700	56	23600	63	23400	67	23100	71	22800	20
25	41	17700	47	18000	57	18300	63	18500	67	18700	25
30	28	12500	38	12800	50	13300	57	13500	62	13600	30
35			25	9300	43	9700	52	10000	58	10200	35
40					34	7100	46	7400	53	7600	40
45					22	5100	39	5400	48	5700	45
50							31	3900	42	4100	50
55							20	2600	36	2800	55
ZERO DEGREE BOOM ANGLE LOADS (LB) / ( RADIUS (FT.))											
	0	9100 (34.0)	0	6700 (38.5)	0	3200 (48.5)		0 (58.5)		—	

MINIMUM BOOM ANGLE (DEGREES) FOR INDICATED BOOM LENGTH (NO LOAD)	-2
MAXIMUM BOOM LENGTH (FEET) AT -2 DEGREE BOOM ANGLE (NO LOAD)	65

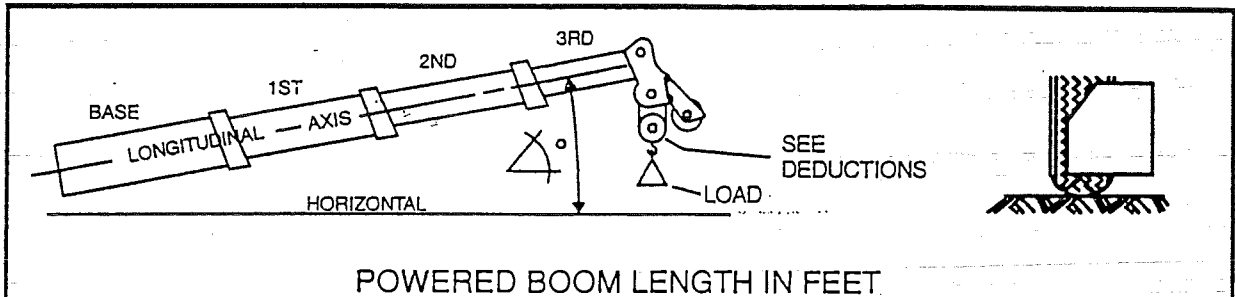
TIRE SIZE	ROADING	STATIC
14.00R20	90	105
315/80R22.5	115	115
425/65R22.5	120	120



# RATED LIFTING CAPACITIES IN POUNDS

40.5 - 75FT BOOM ON TIRES  
CREEP - OVER REAR

9700 POUND TOTAL COUNTERWEIGHT  
LOAD MOMENT DEVICE (LMI) CODE # 01



POWERED BOOM LENGTH IN FEET

LOAD RADIUS FT.	40.5FT		45FT		55FT		65FT		75FT		LOAD RADIUS FT.
	LOADED BOOM ANGLE X°	LOAD, LB	LOADED BOOM ANGLE X°	LOAD, LB	LOADED BOOM ANGLE X°	LOAD, LB	LOADED BOOM ANGLE X°	LOAD, LB	LOADED BOOM ANGLE X°	LOAD, LB	
		REAR		REAR		REAR		REAR		REAR	
10	68	32600	70	32300	74	31600					10
12	65	29500	68	29200	72	28700	75	28200			12
15	60	25500	63	25400	69	25000	72	24600	75	24200	15
20	51	20400	56	20300	63	20100	67	19900	71	19600	20
25	41	16300	47	16300	57	16200	62	16100	67	15900	25
ZERO DEGREE BOOM ANGLE LOADS (LB) / ( RADIUS (FT.))											
	0	9100 (34.0)	0	6700 (38.5)	0	3200 (48.5)		0 (58.5)		—	

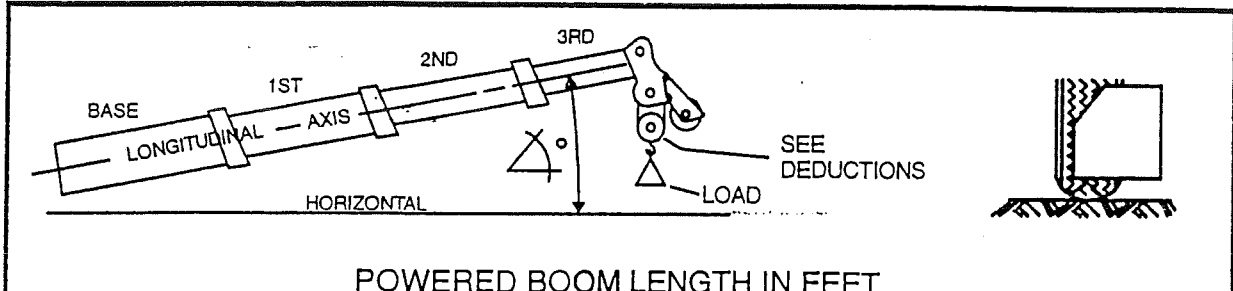
MINIMUM BOOM ANGLE (DEGREES) FOR INDICATED BOOM LENGTH (NO LOAD)	-2
MAXIMUM BOOM LENGTH (FEET) AT -2 DEGREE BOOM ANGLE (NO LOAD)	65

TIRE INFLATION CHART		
TIRE SIZE	ROADING	CREEP
14.00R20	90	105
315/80R22.5	115	115
425/65R22.5	120	120

# RATED LIFTING CAPACITIES IN POUNDS

40.5 - 75FT BOOM ON TIRES  
2.5 MPH - OVER REAR

9700 POUND TOTAL COUNTERWEIGHT  
LOAD MOMENT DEVICE (LMI) CODE # 00



POWERED BOOM LENGTH IN FEET

LOAD RADIUS FT.	40.5FT		45FT		55FT		65FT		75FT		LOAD RADIUS FT.
	LOADED BOOM ANGLE X°	LOAD, LB REAR	LOADED BOOM ANGLE X°	LOAD, LB REAR	LOADED BOOM ANGLE X°	LOAD, LB REAR	LOADED BOOM ANGLE X°	LOAD, LB REAR	LOADED BOOM ANGLE X°	LOAD, LB REAR	
10	68	27400	70	27100	74	26600					10
12	65	24600	68	24400	72	24000	75	23600			12
15	60	21100	63	21000	69	20700	72	20400	75	20100	15
20	51	16600	56	16500	63	16400	67	16200	71	16100	20
25	41	13100	47	13100	57	13100	62	13000	67	12900	25
ZERO DEGREE BOOM ANGLE LOADS (LB) / ( RADIUS (FT.))											
	0	8500 (34.0)	0	6600 (38.5)	0	3200 (48.5)		0 (58.5)		---	

MINIMUM BOOM ANGLE (DEGREES) FOR INDICATED BOOM LENGTH (NO LOAD)	-2
MAXIMUM BOOM LENGTH (FEET) AT -2 DEGREE BOOM ANGLE (NO LOAD)	65

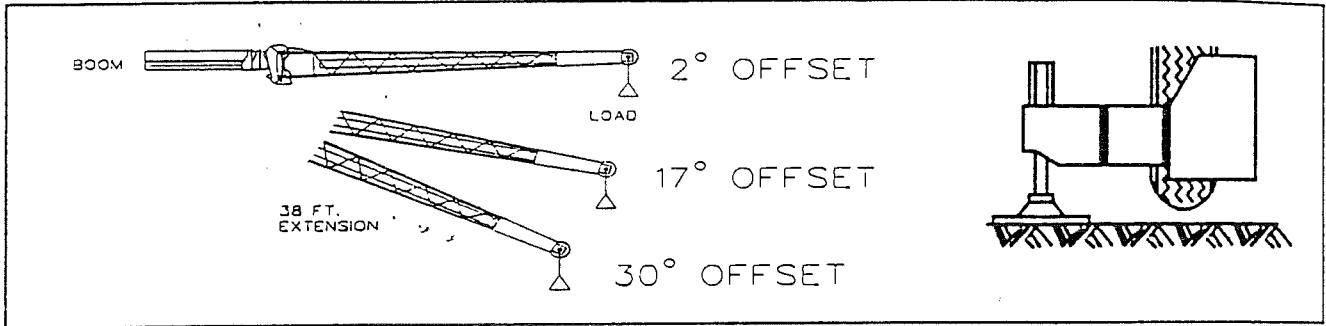
TIRE SIZE	ROADING	2.5 MPH
14.00R20	90	105
315/80R22.5	115	115
425/65R22.5	120	120

# RATED LIFTING CAPACITIES IN POUNDS

126FT BOOM FULLY EXTENDED  
 126FT BOOM + 38FT EXTENSION = 164FT TOTAL  
 FULLY EXTENDED OUTRIGGERS - OVER REAR

9700 POUND TOTAL COUNTERWEIGHT

LOAD MOMENT DEVICE (LMI) CODES # 11, 12, 13



CODE #11		
2 DEG EXT OFFSET WITH STINGER RETRACTED		REF. LOAD RADIUS FT.  FOR 164 FOOT BOOM ONLY
FOR BOOM LENGTHS > 128.0 FT - 164 FT		
LOADED BOOM ANGLE $\alpha^\circ$	LOAD, LB  OVER REAR	
77	11200	40
75	10500	45
74	9900	50
72	9300	55
70	8800	60
68	8300	65
67	7800	70
65	7400	75
63	7000	80
61	6600	85
59	6000	90
54	4300	100
49	2900	110

CODE #12		
17 DEG EXT OFFSET WITH STINGER RETRACTED		REF. LOAD RADIUS FT.  FOR 164 FOOT BOOM ONLY
FOR BOOM LENGTHS > 128.0 FT - 164 FT		
LOADED BOOM ANGLE $\alpha^\circ$	LOAD, LB  OVER REAR	
77	8700	50
75	8400	55
73	8000	60
72	7700	65
70	7300	70
68	6900	75
66	6500	80
64	6200	85
62	5900	90
57	4900	100
52	3400	110
46	2200	120

CODE #13		
30 DEG EXT OFFSET WITH STINGER RETRACTED		REF. LOAD RADIUS FT.  FOR 164 FOOT BOOM ONLY
FOR BOOM LENGTHS > 128.0 FT - 164 FT		
LOADED BOOM ANGLE $\alpha^\circ$	LOAD, LB  OVER REAR	
77	6800	55
75	6500	60
74	6400	65
72	6200	70
70	6000	75
68	5800	80
66	5700	85
63	5500	90
59	5200	100
54	3700	110
48	2400	120

REFERENCE LOAD RADIUS IS FOR 164 FT. BOOM ONLY  
 FOR BOOM LENGTHS LESS THAN 164 FT., USE BOOM ANGLES ONLY

MINIMUM BOOM ANGLE (DEG) FOR INDICATED BOOM LENGTH (NO LOAD)	-2
MAXIMUM BOOM LENGTH (FEET) AT -2 DEGREE BOOM ANGLE (NO LOAD)	75

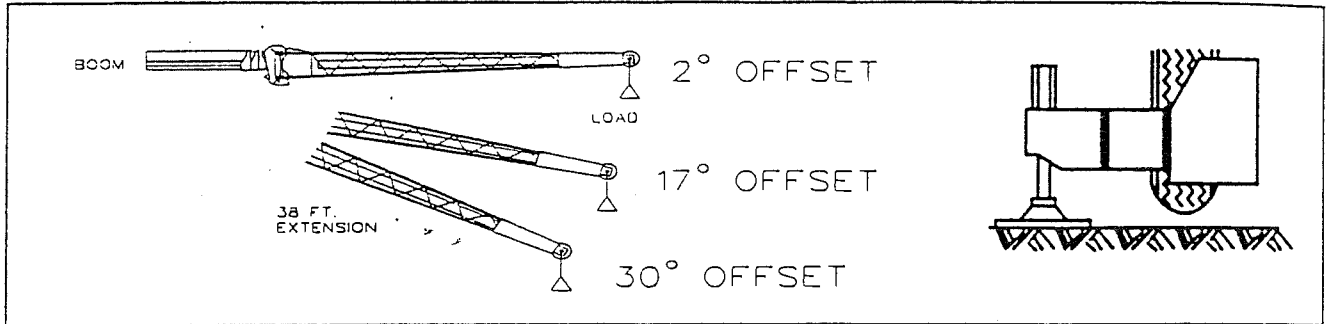
LIFTING CAPACITIES OVER REAR AT 0 DEG. BOOM ANGLE						
AREA OF OPERATION OVER REAR	BOOM ANGLE	MAIN BOOM LENGTH IN FEET, LOAD IN POUNDS				
		40.5	45.0	55.0	65.0	75.0
	0°	5000	5000	4100	2400	0

# RATED LIFTING CAPACITIES IN POUNDS

126FT BOOM FULLY EXTENDED  
 126FT BOOM + 38FT EXTENSION = 164FT TOTAL  
 FULLY EXTENDED OUTRIGGERS - OVER SIDE

9700 POUND TOTAL COUNTERWEIGHT

LOAD MOMENT DEVICE (LMI) CODES # 11, 12, 13



CODE #11		
2 DEG EXT OFFSET WITH STINGER RETRACTED		REF. LOAD RADIUS FT.  FOR 164 FOOT BOOM ONLY
FOR BOOM LENGTHS > 128.0 FT - 164 FT		
LOADED BOOM ANGLE X°	LOAD, LB  OVER SIDE	
77	11200	40
75	10500	45
74	9900	50
72	9300	55
70	8800	60
68	8300	65
67	7800	70
65	7400	75
63	6900	80
60	5800	85
58	4800	90
53	3200	100

CODE #12		
17 DEG EXT OFFSET WITH STINGER RETRACTED		REF. LOAD RADIUS FT.  FOR 164 FOOT BOOM ONLY
FOR BOOM LENGTHS > 128.0 FT - 164 FT		
LOADED BOOM ANGLE X°	LOAD, LB  OVER SIDE	
77	8700	50
75	8400	55
73	8000	60
72	7700	65
70	7300	70
68	6900	75
66	6500	80
64	6200	85
61	5600	90
56	3800	100
51	2400	110

CODE #13		
30 DEG EXT OFFSET WITH STINGER RETRACTED		REF. LOAD RADIUS FT.  FOR 164 FOOT BOOM ONLY
FOR BOOM LENGTHS > 128.0 FT - 164 FT		
LOADED BOOM ANGLE X°	LOAD, LB  OVER SIDE	
77	6800	55
75	6500	60
74	6400	65
72	6200	70
70	6000	75
68	5800	80
66	5700	85
63	5500	90
59	4300	100
53	2800	110

REFERENCE LOAD RADIUS IS FOR 164 FT. BOOM ONLY  
 FOR BOOM LENGTHS LESS THAN 164 FT., USE BOOM ANGLES ONLY

MINIMUM BOOM ANGLE (DEG) FOR INDICATED BOOM LENGTH (NO LOAD)	-2
MAXIMUM BOOM LENGTH (FEET) AT -2 DEGREE BOOM ANGLE (NO LOAD)	75

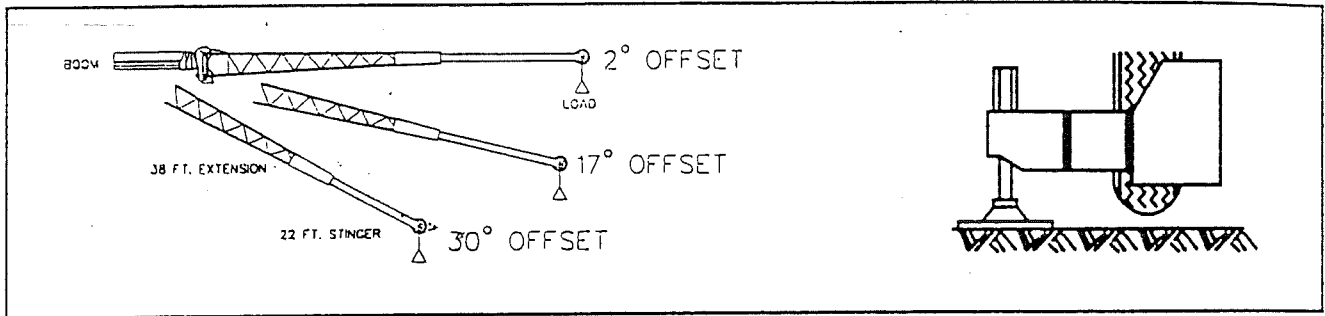
LIFTING CAPACITIES OVER SIDE AT 0 DEG. BOOM ANGLE						
AREA OF OPERATION	BOOM ANGLE	MAIN BOOM LENGTH IN FEET, LOAD IN POUNDS				
		40.5	45.0	55.0	65.0	75.0
OVER SIDE	0°	5000	5000	4100	2400	0

# RATED LIFTING CAPACITIES IN POUNDS

126FT BOOM FULLY EXTENDED  
 126FT BOOM + 60FT EXTENSION = 186FT TOTAL  
 FULLY EXTENDED OUTRIGGERS - OVER REAR

9700 POUND TOTAL COUNTERWEIGHT

LOAD MOMENT DEVICE (LMI) CODES # 14, 15, 16



CODE #14		
2 DEG EXT OFFSET WITH STINGER EXTENDED		REF. LOAD RADIUS FT.  FOR 186 FOOT BOOM ONLY
FOR BOOM LENGTHS > 150.0 FT - 186 FT		
LOADED BOOM ANGLE $\alpha$ °	LOAD, LB  OVER REAR	
77	7100	45
76	6800	50
75	6600	55
73	6300	60
72	6100	65
70	5700	70
68	5500	75
67	5300	80
65	5200	85
64	5100	90
60	4700	100
56	4200	110
52	3100	120
47	2100	130

CODE #15		
17 DEG EXT OFFSET WITH STINGER EXTENDED		REF. LOAD RADIUS FT.  FOR 186 FOOT BOOM ONLY
FOR BOOM LENGTHS > 150.0 FT - 186 FT		
LOADED BOOM ANGLE $\alpha$ °	LOAD, LB  OVER REAR	
77	5000	60
76	4900	65
74	4600	70
72	4400	75
71	4200	80
69	4100	85
67	3900	90
64	3700	100
60	3400	110
56	3200	120
52	2700	130

CODE #16		
30 DEG EXT OFFSET WITH STINGER EXTENDED		REF. LOAD RADIUS FT.  FOR 186 FOOT BOOM ONLY
FOR BOOM LENGTHS > 150.0 FT - 186 FT		
LOADED BOOM ANGLE $\alpha$ °	LOAD, LB  OVER REAR	
77	3700	70
76	3600	75
74	3500	80
72	3300	85
70	3200	90
67	3100	100
63	3000	110
59	2700	120
54	3000	130
49	2000	140

REFERENCE LOAD RADIUS IS FOR 186 FT. BOOM ONLY  
 FOR BOOM LENGTHS LESS THAN 186 FT., USE BOOM ANGLES ONLY

MINIMUM BOOM ANGLE (DEG) FOR INDICATED BOOM LENGTH (NO LOAD)	-2
MAXIMUM BOOM LENGTH (FEET) AT -2 DEGREE BOOM ANGLE (NO LOAD)	65

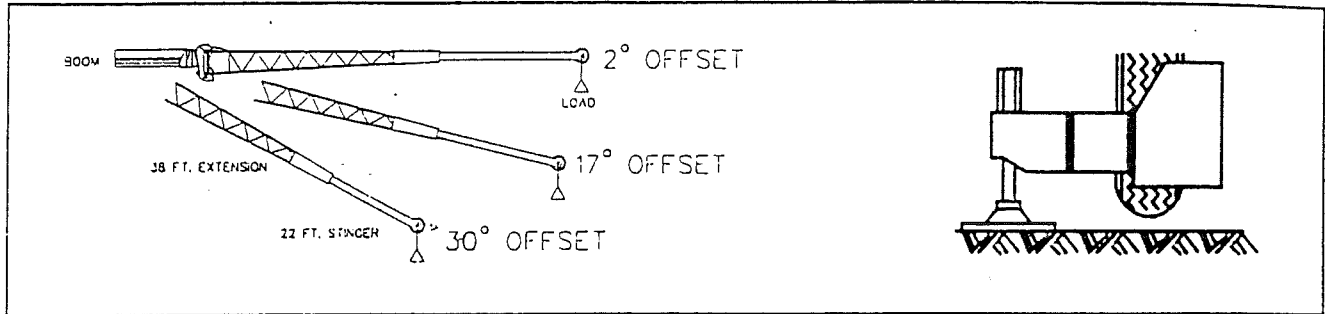
LIFTING CAPACITIES OVER REAR AT 0 DEG. BOOM ANGLE					
AREA OF OPERATION	BOOM ANGLE	MAIN BOOM LENGTH IN FEET, LOAD IN POUNDS			
		40.5	45.0	55.0	65.0
OVER REAR	0°	3000	3000	2700	0

# RATED LIFTING CAPACITIES IN POUNDS

126FT BOOM FULLY EXTENDED  
 126FT BOOM + 60FT EXTENSION = 186FT TOTAL  
 FULLY EXTENDED OUTRIGGERS - OVER SIDE

9700 POUND TOTAL COUNTERWEIGHT

LOAD MOMENT DEVICE (LMI) CODES # 14, 15, 16



CODE #14		
2 DEG EXT OFFSET WITH STINGER EXTENDED		REF. LOAD RADIUS FT.  FOR 186 FOOT BOOM ONLY
FOR BOOM LENGTHS > 150.0 FT - 186 FT		
LOADED BOOM ANGLE $\alpha^\circ$	LOAD, LB  OVER SIDE	
77	7100	45
76	6800	50
75	6600	55
73	6300	60
72	6100	65
70	5700	70
68	5500	75
67	5300	80
65	5200	85
64	5100	90
60	4600	100
56	3300	110
51	2200	120

CODE #15		
17 DEG EXT OFFSET WITH STINGER EXTENDED		REF. LOAD RADIUS FT.  FOR 186 FOOT BOOM ONLY
FOR BOOM LENGTHS > 150.0 FT - 186 FT		
LOADED BOOM ANGLE $\alpha^\circ$	LOAD, LB  OVER SIDE	
77	5000	60
76	4900	65
74	4600	70
72	4400	75
71	4200	80
69	4100	85
67	3900	90
64	3700	100
60	3400	110
56	2900	120
51	1900	130

CODE #16		
30 DEG EXT OFFSET WITH STINGER EXTENDED		REF. LOAD RADIUS FT.  FOR 186 FOOT BOOM ONLY
FOR BOOM LENGTHS > 150.0 FT - 186 FT		
LOADED BOOM ANGLE $\alpha^\circ$	LOAD, LB  OVER SIDE	
77	3700	70
76	3600	75
74	3500	80
72	3300	85
70	3200	90
67	3100	100
63	3000	110
59	2700	120
54	2100	130

REFERENCE LOAD RADIUS IS FOR 186 FT. BOOM ONLY  
 FOR BOOM LENGTHS LESS THAN 186 FT., USE BOOM ANGLES ONLY

MINIMUM BOOM ANGLE (DEG) FOR INDICATED BOOM LENGTH (NO LOAD)	-2
MAXIMUM BOOM LENGTH (FEET) AT -2 DEGREE BOOM ANGLE (NO LOAD)	65

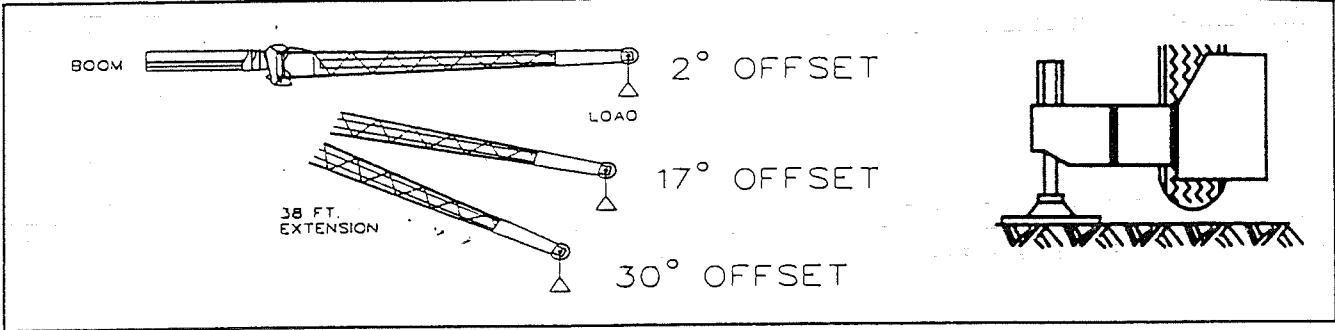
LIFTING CAPACITIES OVER SIDE AT 0 DEG. BOOM ANGLE						
AREA OF OPERATION	BOOM ANGLE	MAIN BOOM LENGTH IN FEET, LOAD IN POUNDS				
		40.5	45.0	55.0	65.0	
OVER SIDE	0°	3000	3000	2700	0	

# RATED LIFTING CAPACITIES IN POUNDS

126FT BOOM EXTENDED TO 90FT MAXIMUM  
 90FT BOOM + 38FT EXTENSION = 128FT TOTAL  
 FULLY EXTENDED OUTRIGGERS - OVER REAR

9700 POUND TOTAL COUNTERWEIGHT

LOAD MOMENT DEVICE (LMI) CODES # 11, 12, 13



CODE #11		
2 DEG EXT OFFSET WITH STINGER RETRACTED		REF. LOAD RADIUS FT.  FOR 128 FOOT BOOM ONLY
FOR BOOM LENGTHS 78.5 FT - 128 FT		
LOADED BOOM ANGLE $\alpha$ °	LOAD, LB  OVER REAR	
78	16000	25
76	15000	30
73	13500	35
71	12400	40
69	11500	45
66	10700	50
64	10000	55
61	9300	60
59	8600	65
56	8100	70
53	7600	75
50	7100	80
47	6700	85
44	6500	90
37	4800	100
27	3400	110

CODE #12		
17 DEG EXT OFFSET WITH STINGER RETRACTED		REF. LOAD RADIUS FT.  FOR 128 FOOT BOOM ONLY
FOR BOOM LENGTHS 78.5 FT - 128 FT		
LOADED BOOM ANGLE $\alpha$ °	LOAD, LB  OVER REAR	
77	9600	35
75	8900	40
73	8400	45
70	7900	50
68	7500	55
65	7100	60
63	6700	65
60	6400	70
57	6200	75
54	5900	80
51	5700	85
48	5500	90
40	5200	100
30	3700	110

CODE #13		
30 DEG EXT OFFSET WITH STINGER RETRACTED		REF. LOAD RADIUS FT.  FOR 128 FOOT BOOM ONLY
FOR BOOM LENGTHS 78.5 FT - 128 FT		
LOADED BOOM ANGLE $\alpha$ °	LOAD, LB  OVER REAR	
78	7100	40
76	6800	45
73	6500	50
71	6200	55
68	6000	60
65	5800	65
63	5600	70
60	5400	75
57	5300	80
53	5100	85
50	5000	90
42	4800	100
31	3800	110

REFERENCE LOAD RADIUS IS FOR 128 FT. BOOM ONLY  
 FOR BOOM LENGTHS LESS THAN 128 FT., USE BOOM ANGLES ONLY

MINIMUM BOOM ANGLE (DEG) FOR INDICATED BOOM LENGTH (NO LOAD)	-2
MAXIMUM BOOM LENGTH (FEET) AT -2 DEGREE BOOM ANGLE (NO LOAD)	75

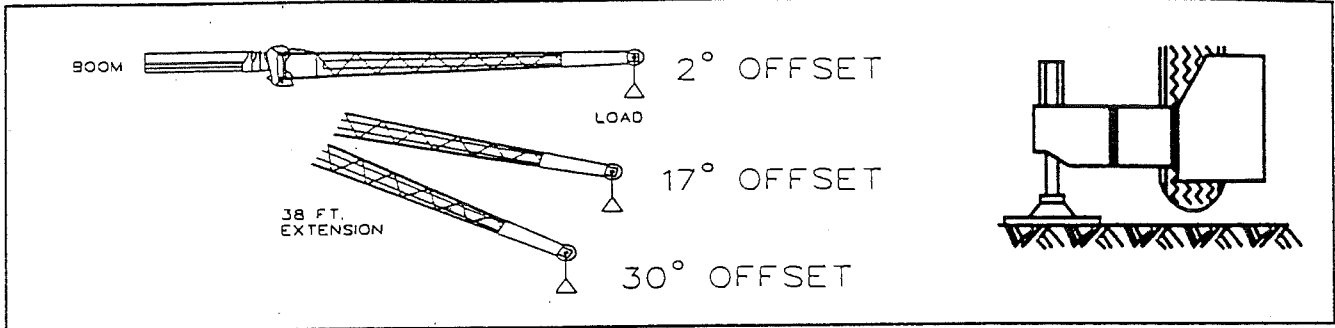
LIFTING CAPACITIES OVER REAR AT 0 DEG. BOOM ANGLE						
AREA OF OPERATION	BOOM ANGLE	MAIN BOOM LENGTH IN FEET, LOAD IN POUNDS				
		40.5	45.0	55.0	65.0	75.0
OVER REAR	0°	5000	5000	4100	2400	0

# RATED LIFTING CAPACITIES IN POUNDS

-126FT BOOM EXTENDED TO 90FT MAXIMUM  
 90FT BOOM + 38FT EXTENSION = 128FT TOTAL  
 FULLY EXTENDED OUTRIGGERS - OVER SIDE

9700 POUND TOTAL COUNTERWEIGHT

LOAD MOMENT DEVICE (LMI) CODES # 11, 12, 13



CODE #11		
2 DEG EXT OFFSET WITH STINGER RETRACTED		REF. LOAD RADIUS FT.  FOR 128 FOOT BOOM ONLY
FOR BOOM LENGTHS 78.5 FT - 128 FT		
LOADED BOOM ANGLE	LOAD, LB	
$\alpha^\circ$	OVER SIDE	
78	16000	25
76	15000	30
73	13500	35
71	12400	40
69	11500	45
66	10700	50
64	10000	55
61	9300	60
59	8600	65
56	8100	70
53	7600	75
50	7100	80
47	6400	85
44	5400	90
36	3800	100
27	2500	110

CODE #12		
17 DEG EXT OFFSET WITH STINGER RETRACTED		REF. LOAD RADIUS FT.  FOR 128 FOOT BOOM ONLY
FOR BOOM LENGTHS 78.5 FT - 128 FT		
LOADED BOOM ANGLE	LOAD, LB	
$\alpha^\circ$	OVER SIDE	
77	9600	35
75	8900	40
73	8400	45
70	7900	50
68	7500	55
65	7100	60
63	6700	65
60	6400	70
57	6200	75
54	5900	80
51	5700	85
48	5500	90
40	4200	100
30	2700	110

CODE #13		
30 DEG EXT OFFSET WITH STINGER RETRACTED		REF. LOAD RADIUS FT.  FOR 128 FOOT BOOM ONLY
FOR BOOM LENGTHS 78.5 FT - 128 FT		
LOADED BOOM ANGLE	LOAD, LB	
$\alpha^\circ$	OVER SIDE	
78	7100	40
76	6800	45
73	6500	50
71	6200	55
68	6000	60
65	5800	65
63	5600	70
60	5400	75
57	5300	80
53	5100	85
50	5000	90
42	4400	100
31	2800	110

REFERENCE LOAD RADIUS IS FOR 128 FT. BOOM ONLY  
 FOR BOOM LENGTHS LESS THAN 128 FT., USE BOOM ANGLES ONLY

MINIMUM BOOM ANGLE (DEG) FOR INDICATED BOOM LENGTH (NO LOAD)	-2
MAXIMUM BOOM LENGTH (FEET) AT -2 DEGREE BOOM ANGLE (NO LOAD)	75

LIFTING CAPACITIES OVER SIDE AT 0 DEG. BOOM ANGLE						
AREA OF OPERATION	BOOM ANGLE	MAIN BOOM LENGTH IN FEET, LOAD IN POUNDS				
		40.5	45.0	55.0	65.0	75.0
OVER SIDE	0°	5000	5000	4100	2400	0

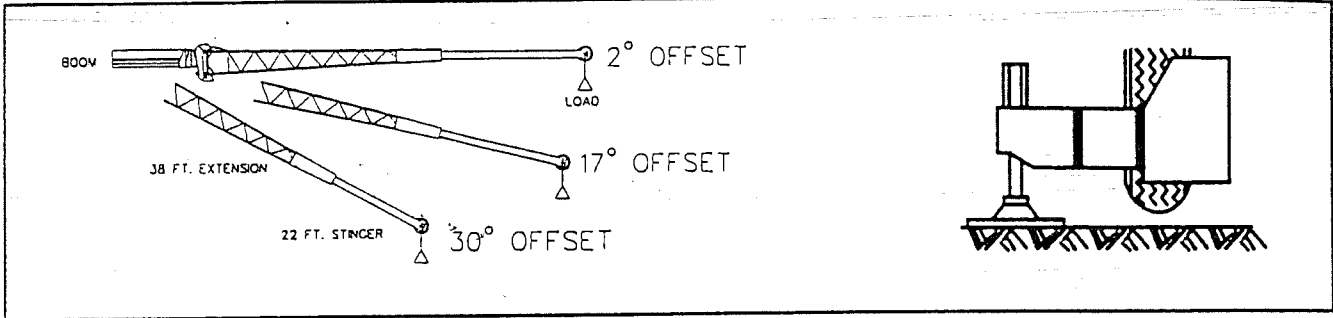


# RATED LIFTING CAPACITIES IN POUNDS

126FT BOOM EXTENDED TO 90FT MAXIMUM  
 90FT BOOM + 60FT EXTENSION = 150FT TOTAL  
 FULLY EXTENDED OUTRIGGERS - OVER REAR

9700 POUND TOTAL COUNTERWEIGHT

LOAD MOMENT DEVICE (LMI) CODES # 14, 15, 16



CODE #14		
2 DEG EXT OFFSET WITH STINGER EXTENDED		REF. LOAD RADIUS FT.  FOR 150 FOOT BOOM ONLY
FOR BOOM LENGTHS 100.5 FT - 150 FT		
LOADED BOOM ANGLE	LOAD, LB	
$\alpha^\circ$	OVER REAR	
78	8000	30
76	7500	35
74	7000	40
72	6700	45
70	6400	50
68	6100	55
66	5800	60
64	5400	65
62	5300	70
60	5100	75
58	5000	80
55	4800	85
53	4700	90
48	4400	100
42	4000	110
36	3600	120
28	2700	130

CODE #15		
17 DEG EXT OFFSET WITH STINGER EXTENDED		REF. LOAD RADIUS FT.  FOR 150 FOOT BOOM ONLY
FOR BOOM LENGTHS 100.5 FT - 150 FT		
LOADED BOOM ANGLE	LOAD, LB	
$\alpha^\circ$	OVER REAR	
78	5400	45
76	5100	50
74	4900	55
72	4600	60
70	4400	65
67	4200	70
65	4000	75
63	3800	80
61	3700	85
58	3500	90
53	3300	100
47	3000	110
40	2900	120
32	2700	130

CODE #16		
30 DEG EXT OFFSET WITH STINGER EXTENDED		REF. LOAD RADIUS FT.  FOR 150 FOOT BOOM ONLY
FOR BOOM LENGTHS 100.5 FT - 150 FT		
LOADED BOOM ANGLE	LOAD, LB	
$\alpha^\circ$	OVER REAR	
78	3900	55
76	3700	60
74	3600	65
72	3500	70
69	3400	75
67	3300	80
64	3200	85
62	3000	90
56	2900	100
50	2800	110
43	2700	120
33	2600	130

REFERENCE LOAD RADIUS IS FOR 150 FT. BOOM ONLY  
 FOR BOOM LENGTHS LESS THAN 150 FT., USE BOOM ANGLES ONLY

MINIMUM BOOM ANGLE (DEG) FOR INDICATED BOOM LENGTH (NO LOAD)	-2
MAXIMUM BOOM LENGTH (FEET) AT -2 DEGREE BOOM ANGLE (NO LOAD)	65

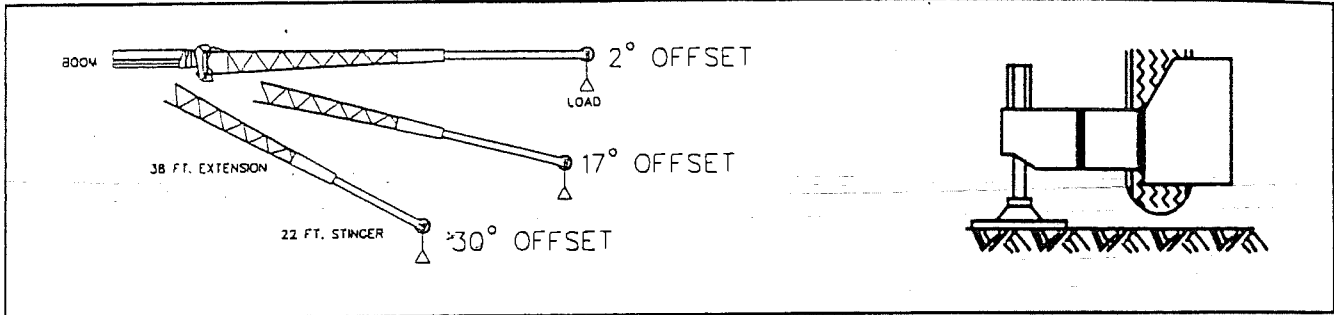
LIFTING CAPACITIES OVER REAR AT 0 DEG. BOOM ANGLE					
AREA OF OPERATION	BOOM ANGLE	MAIN BOOM LENGTH IN FEET, LOAD IN POUNDS			
		40.5	45.0	55.0	65.0
OVER REAR	0°	3000	3000	2700	0

# RATED LIFTING CAPACITIES IN POUNDS

126FT BOOM EXTENDED TO 90FT MAXIMUM  
 90FT BOOM + 60FT EXTENSION = 150FT TOTAL  
 FULLY EXTENDED OUTRIGGERS - OVER SIDE

9700 POUND TOTAL COUNTERWEIGHT

LOAD MOMENT DEVICE (LMI) CODES # 14, 15, 16



CODE #14		
2 DEG EXT OFFSET WITH STINGER EXTENDED		REF. LOAD RADIUS FT.  FOR 150 FOOT BOOM ONLY
FOR BOOM LENGTHS 100.5 FT - 150 FT		
LOADED BOOM ANGLE	LOAD, LB	
$\alpha^\circ$	OVER SIDE	
78	8000	30
76	7500	35
74	7000	40
72	6700	45
70	6400	50
68	6100	55
66	5800	60
64	5400	65
62	5300	70
60	5100	75
58	5000	80
55	4800	85
53	4700	90
48	4400	100
42	3800	110
36	2800	120

CODE #15		
17 DEG EXT OFFSET WITH STINGER EXTENDED		REF. LOAD RADIUS FT.  FOR 150 FOOT BOOM ONLY
FOR BOOM LENGTHS 100.5 FT - 150 FT		
LOADED BOOM ANGLE	LOAD, LB	
$\alpha^\circ$	OVER SIDE	
78	5400	45
76	5100	50
74	4900	55
72	4600	60
70	4400	65
67	4200	70
65	4000	75
63	3800	80
61	3700	85
58	3500	90
53	3300	100
47	3000	110
40	2900	120
32	2200	130

CODE #16		
30 DEG EXT OFFSET WITH STINGER EXTENDED		REF. LOAD RADIUS FT.  FOR 150 FOOT BOOM ONLY
FOR BOOM LENGTHS 100.5 FT - 150 FT		
LOADED BOOM ANGLE	LOAD, LB	
$\alpha^\circ$	OVER SIDE	
78	3900	55
76	3700	60
74	3600	65
72	3500	70
69	3400	75
67	3300	80
64	3200	85
62	3000	90
56	2900	100
50	2800	110
43	2700	120
33	2300	130

REFERENCE LOAD RADIUS IS FOR 150 FT. BOOM ONLY  
 FOR BOOM LENGTHS LESS THAN 150 FT., USE BOOM ANGLES ONLY

MINIMUM BOOM ANGLE (DEG) FOR INDICATED BOOM LENGTH (NO LOAD)	-2
MAXIMUM BOOM LENGTH (FEET) AT -2 DEGREE BOOM ANGLE (NO LOAD)	65

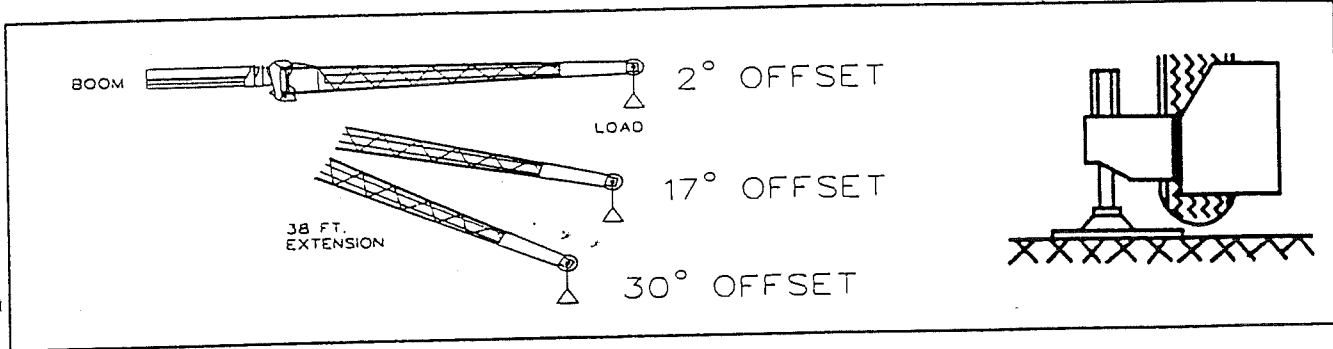
LIFTING CAPACITIES OVER SIDE AT 0 DEG. BOOM ANGLE						
AREA OF OPERATION	BOOM ANGLE	MAIN BOOM LENGTH IN FEET, LOAD IN POUNDS				
		40.5	45.0	55.0	65.0	
OVER SIDE	0°	3000	3000	2700	0	

# RATED LIFTING CAPACITIES IN POUNDS

126FT BOOM EXTENDED TO 90FT MAXIMUM  
 90FT BOOM + 38FT EXTENSION = 128FT TOTAL  
 MID POSITION OUTRIGGERS - OVER SIDE/REAR

9700 POUND TOTAL COUNTERWEIGHT

LOAD MOMENT DEVICE (LMI) CODES # 37, 38, 39



CODE #37		
2 DEG EXT OFFSET WITH STINGER RETRACTED		REF. LOAD RADIUS FT.  FOR 128 FOOT BOOM ONLY
FOR BOOM LENGTHS 78.5 FT - 128 FT		
LOADED BOOM ANGLE	LOAD, LB	
$\alpha^\circ$	OVER SIDE/REAR	
78	16000	25
76	15000	30
73	13500	35
70	12400	40
69	11500	45
66	9200	50
64	7300	55
61	5700	60
58	4400	65
55	3300	70
52	2300	75

CODE #38		
17 DEG EXT OFFSET WITH STINGER RETRACTED		REF. LOAD RADIUS FT.  FOR 128 FOOT BOOM ONLY
FOR BOOM LENGTHS 78.5 FT - 128 FT		
LOADED BOOM ANGLE	LOAD, LB	
$\alpha^\circ$	OVER SIDE/REAR	
77	9600	35
75	8900	40
73	8400	45
70	7900	50
68	7500	55
65	6900	60
62	5400	65
59	4200	70
56	3200	75
53	2300	80

CODE #39		
30 DEG EXT OFFSET WITH STINGER RETRACTED		REF. LOAD RADIUS FT.  FOR 128 FOOT BOOM ONLY
FOR BOOM LENGTHS 78.5 FT - 128 FT		
LOADED BOOM ANGLE	LOAD, LB	
$\alpha^\circ$	OVER SIDE/REAR	
78	7100	40
76	6800	45
73	6500	50
71	6200	55
68	6000	60
65	5800	65
62	4900	70
59	3800	75
56	2800	80
53	1900	85

REFERENCE LOAD RADIUS IS FOR 128 FT. BOOM ONLY  
 FOR BOOM LENGTHS LESS THAN 128 FT., USE BOOM ANGLES ONLY

MINIMUM BOOM ANGLE (DEG) FOR INDICATED BOOM LENGTH (NO LOAD)	-2
MAXIMUM BOOM LENGTH (FEET) AT -2 DEGREE BOOM ANGLE (NO LOAD)	45

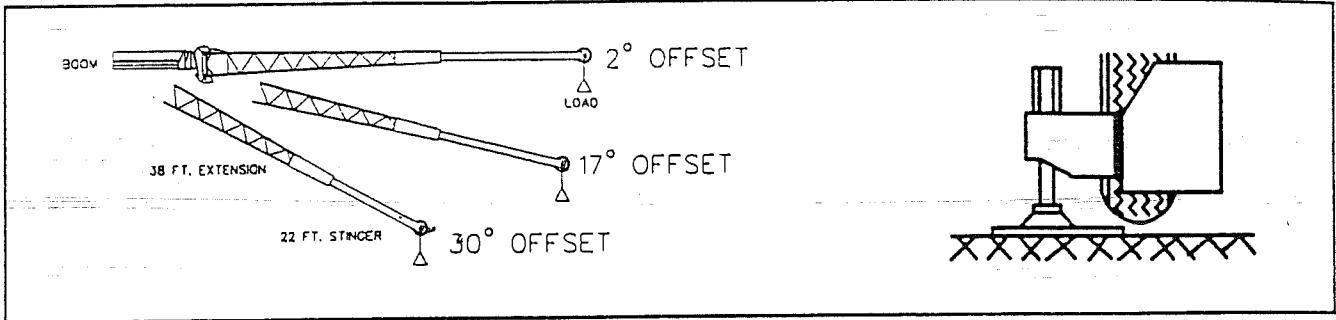
LIFTING CAPACITIES OVER SIDE/REAR AT 0 DEG. BOOM ANGLE				
AREA OF OPERATION	BOOM ANGLE	MAIN BOOM LENGTH IN FEET, LOAD IN POUNDS		
		40.5	45.0	
OVER SIDE/REAR	0°	4800	3700	

# RATED LIFTING CAPACITIES IN POUNDS

126FT BOOM EXTENDED TO 90FT MAXIMUM  
 90FT BOOM + 60FT EXTENSION = 150FT TOTAL  
 MID POSITION OUTRIGGERS - OVER SIDE/REAR

9700 POUND TOTAL COUNTERWEIGHT

LOAD MOMENT DEVICE (LMI) CODES # 40, 41, 42



CODE #40		
2 DEG EXT OFFSET WITH STINGER EXTENDED		REF. LOAD RADIUS FT.  FOR 150 FOOT BOOM ONLY
FOR BOOM LENGTHS 100.5 FT - 150 FT		
LOADED BOOM ANGLE	LOAD, LB	
$\alpha^\circ$	OVER SIDE/REAR	
78	8000	30
76	7500	35
74	7000	40
72	6700	45
70	6400	50
68	6100	55
66	5800	60
64	5400	65
62	4700	70
60	3800	75
57	3000	80
55	2200	85

CODE #41		
17 DEG EXT OFFSET WITH STINGER EXTENDED		REF. LOAD RADIUS FT.  FOR 150 FOOT BOOM ONLY
FOR BOOM LENGTHS 100.5 FT - 150 FT		
LOADED BOOM ANGLE	LOAD, LB	
$\alpha^\circ$	OVER SIDE/REAR	
78	5400	45
76	5100	50
74	4900	55
72	4600	60
70	4400	65
67	4200	70
65	4000	75
63	3800	80
60	3300	85
58	2600	90

CODE #42		
30 DEG EXT OFFSET WITH STINGER EXTENDED		REF. LOAD RADIUS FT.  FOR 150 FOOT BOOM ONLY
FOR BOOM LENGTHS 100.5 FT - 150 FT		
LOADED BOOM ANGLE	LOAD, LB	
$\alpha^\circ$	OVER SIDE/REAR	
78	3900	55
76	3700	60
74	3600	65
72	3500	70
69	3400	75
67	3300	80
64	3200	85
62	3000	90
56	1900	100

REFERENCE LOAD RADIUS IS FOR 150 FT. BOOM ONLY  
 FOR BOOM LENGTHS LESS THAN 150 FT., USE BOOM ANGLES ONLY

MINIMUM BOOM ANGLE (DEG) FOR INDICATED BOOM LENGTH (NO LOAD)	-2
MAXIMUM BOOM LENGTH (FEET) AT -2 DEGREE BOOM ANGLE (NO LOAD)	45

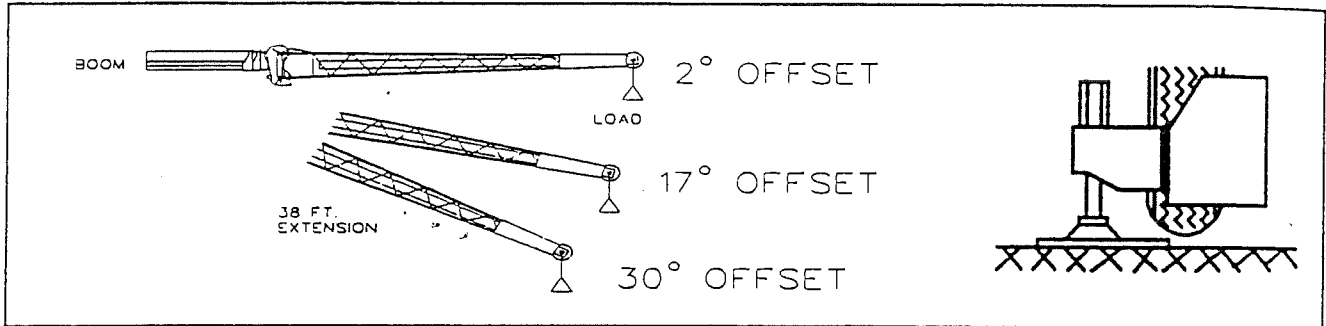
LIFTING CAPACITIES OVER SIDE/REAR AT 0 DEG. BOOM ANGLE					
AREA OF OPERATION	BOOM ANGLE	MAIN BOOM LENGTH IN FEET, LOAD IN POUNDS			
		40.5	45.0		
OVER SIDE/REAR	0°	3000	2500		

# RATED LIFTING CAPACITIES IN POUNDS

126FT BOOM FULLY EXTENDED  
 126FT BOOM + 38FT EXTENSION = 164FT TOTAL  
 MID POSITION OUTRIGGERS - OVER SIDE/REAR

9700 POUND TOTAL COUNTERWEIGHT

LOAD MOMENT DEVICE (LMI) CODES # 37, 38, 39



CODE #37		
2 DEG EXT OFFSET WITH STINGER RETRACTED		REF. LOAD RADIUS FT.  FOR 164 FOOT BOOM ONLY
FOR BOOM LENGTHS > 128.0 FT - 164 FT		
LOADED BOOM ANGLE	LOAD, LB	
$\alpha^\circ$	OVER SIDE/REAR	
77	11200	40
75	10500	45
73	8600	50
71	6700	55
69	5100	60
67	3800	65
65	2700	70

CODE #38		
17 DEG EXT OFFSET WITH STINGER RETRACTED		REF. LOAD RADIUS FT.  FOR 164 FOOT BOOM ONLY
FOR BOOM LENGTHS > 128.0 FT - 164 FT		
LOADED BOOM ANGLE	LOAD, LB	
$\alpha^\circ$	OVER SIDE/REAR	
77	8700	50
75	8200	55
73	6400	60
71	5000	65
68	3800	70
66	2700	75

CODE #39		
30 DEG EXT OFFSET WITH STINGER RETRACTED		REF. LOAD RADIUS FT.  FOR 164 FOOT BOOM ONLY
FOR BOOM LENGTHS > 128.0 FT - 164 FT		
LOADED BOOM ANGLE	LOAD, LB	
$\alpha^\circ$	OVER SIDE/REAR	
77	6800	55
75	6500	60
73	5900	65
71	4600	70
69	3500	75
66	2500	80

REFERENCE LOAD RADIUS IS FOR 164 FT. BOOM ONLY  
 FOR BOOM LENGTHS LESS THAN 164 FT., USE BOOM ANGLES ONLY

MINIMUM BOOM ANGLE (DEG) FOR INDICATED BOOM LENGTH (NO LOAD)	-2
MAXIMUM BOOM LENGTH (FEET) AT -2 DEGREE BOOM ANGLE (NO LOAD)	45

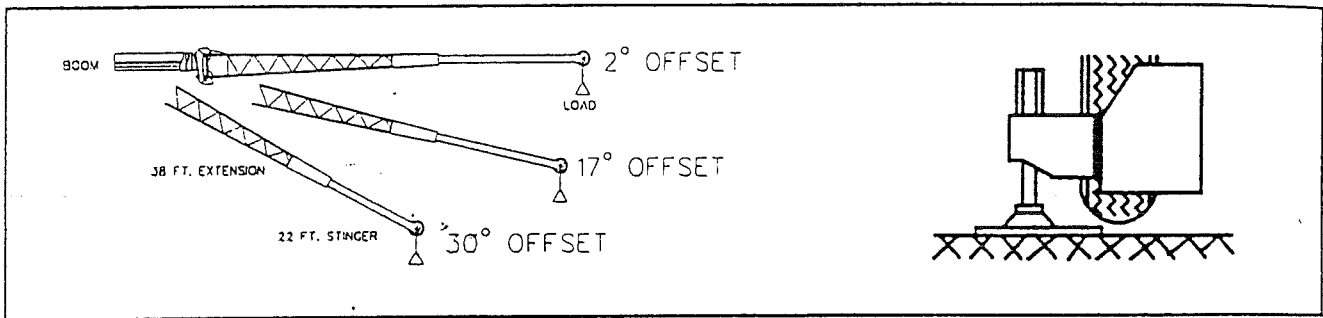
LIFTING CAPACITIES OVER SIDE/REAR AT 0 DEG. BOOM ANGLE					
AREA OF OPERATION	BOOM ANGLE	MAIN BOOM LENGTH IN FEET, LOAD IN POUNDS			
		40.5	45.0		
OVER SIDE/REAR	0°	4800	3700		

# RATED LIFTING CAPACITIES IN POUNDS

126FT BOOM FULLY EXTENDED  
 126FT BOOM + 60FT EXTENSION = 186FT TOTAL  
 MID POSITION OUTRIGGERS - OVER SIDE/REAR

9700 POUND TOTAL COUNTERWEIGHT

LOAD MOMENT DEVICE (LMI) CODES # 40, 41, 42



CODE #40		
2 DEG EXT OFFSET WITH STINGER EXTENDED		REF. LOAD RADIUS FT.  FOR 186 FOOT BOOM ONLY
FOR BOOM LENGTHS > 165.0 FT - 186 FT		
LOADED BOOM ANGLE	LOAD, LB	
$\alpha^\circ$	OVER SIDE/REAR	
77	7100	45
76	6800	50
75	6600	55
73	6300	60
71	5300	65
69	4200	70
67	3200	75
66	2400	80

CODE #41		
17 DEG EXT OFFSET WITH STINGER EXTENDED		REF. LOAD RADIUS FT.  FOR 186 FOOT BOOM ONLY
FOR BOOM LENGTHS > 165.0 FT - 186 FT		
LOADED BOOM ANGLE	LOAD, LB	
$\alpha^\circ$	OVER SIDE/REAR	
77	5000	60
76	4900	65
74	4600	70
72	4400	75
71	3700	80
69	2900	85
67	2200	90

CODE #42		
30 DEG EXT OFFSET WITH STINGER EXTENDED		REF. LOAD RADIUS FT.  FOR 186 FOOT BOOM ONLY
FOR BOOM LENGTHS > 165.0 FT - 186 FT		
LOADED BOOM ANGLE	LOAD, LB	
$\alpha^\circ$	OVER SIDE/REAR	
77	3700	70
76	3600	75
74	3500	80
72	3300	85
70	2900	90

REFERENCE LOAD RADIUS IS FOR 186 FT. BOOM ONLY  
 FOR BOOM LENGTHS LESS THAN 186 FT., USE BOOM ANGLES ONLY

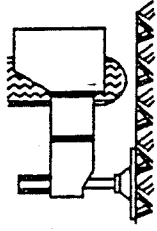
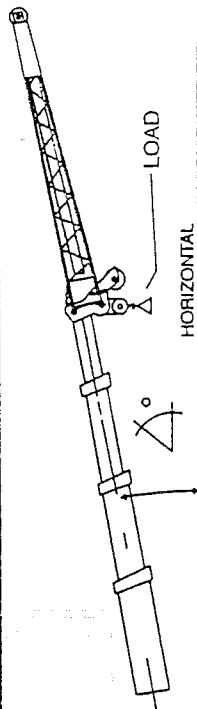
MINIMUM BOOM ANGLE (DEG) FOR INDICATED BOOM LENGTH (NO LOAD)	-2
MAXIMUM BOOM LENGTH (FEET) AT -2 DEGREE BOOM ANGLE (NO LOAD)	45

LIFTING CAPACITIES OVER SIDE/REAR AT 0 DEG. BOOM ANGLE					
AREA OF OPERATION	BOOM ANGLE	MAIN BOOM LENGTH IN FEET, LOAD IN POUNDS			
		40.5	45.0		
OVER SIDE/REAR	0°	3000	2500		

# RATED LIFTING CAPACITIES IN POUNDS

40.5 - 126FT BOOM ON FULLY EXTENDED OUTRIGGERS - OVER REAR  
9700 POUND TOTAL COUNTERWEIGHT

38 FT. EXTENSION ERECTED BUT NOT USED  
LOAD MOMENT DEVICE (LMI) CODE # 411



## POWERED BOOM LENGTH IN FEET

LOAD RADIUS FT.	40.5FT		45FT		55FT		65FT		75FT		85FT		95FT		105FT		115FT		126FT		LOAD RADIUS FT.	
	LOADED BOOM ANGLE X°	LOAD, LB REAR	LOADED BOOM ANGLE X°	LOAD, LB REAR	LOADED BOOM ANGLE X°	LOAD, LB REAR	LOADED BOOM ANGLE X°	LOAD, LB REAR	LOADED BOOM ANGLE X°	LOAD, LB REAR	LOADED BOOM ANGLE X°	LOAD, LB REAR	LOADED BOOM ANGLE X°	LOAD, LB REAR	LOADED BOOM ANGLE X°	LOAD, LB REAR	LOADED BOOM ANGLE X°	LOAD, LB REAR	LOADED BOOM ANGLE X°	LOAD, LB REAR		
10	68	145500	71	88800	74	85200															10	
12	65	111400	68	91600	72	84900	75	69800														12
15	60	88100	64	87500	69	78600	73	64700	75	54200												15
20	51	65500	56	65400	63	59200	68	56100	71	48500	74	42300	76	36200								20
25	41	51500	48	51300	57	49700	63	46200	67	41900	70	35800	73	32600	75	28600						25
30	28	40300	38	40800	50	41500	58	37400	63	37900	67	33500	70	29100	72	25300	74	22200	76	19500		30
35			25	32200	43	32100	52	30900	58	29100	63	29400	67	25800	70	22400	72	19800	74	17500		35
40					34	24600	46	24300	54	23500	59	23900	63	23000	67	19900	69	17700	72	15700		40
45					22	19800	39	20200	49	19600	55	19000	60	18500	64	17600	67	15800	69	14400		45
50					31	16100	31	16100	43	16300	51	16500	56	15500	60	15100	64	14600	67	12900		50
55					21	12900		12900	37	13200	46	13300	52	13700	57	13600	61	13100	64	11600		55
60									29	10600	41	10800	48	11100	53	11100	58	11200	62	10400		60
65									19	8500	35	8700	43	9100	50	9000	55	9100	59	9200		65
70											28	7000	39	7300	46	7200	51	7300	56	7400		70
75											18	5500	33	5900	42	5700	48	5800	53	5900		75
80													27	4600	37	4400	44	4500	50	4600		80
85													18	3500	32	3300	40	3400	47	3500		85
90															25	2400	36	2500	43	2600		90

## ZERO DEGREE BOOM ANGLE LOADS (LB)/( RADI) ( FT.)

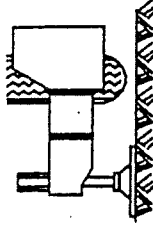
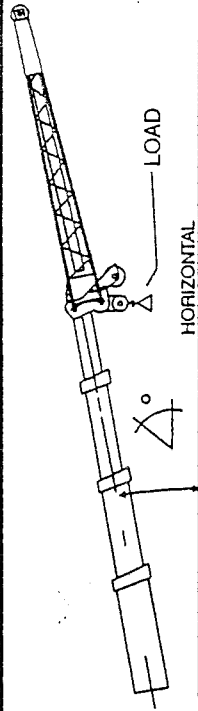
0	19600 (34.0)	0	15200 (38.5)	0	8900 (48.5)	0	5500 (58.5)	0	3100 (68.5)	0		0									
---	--------------	---	--------------	---	-------------	---	-------------	---	-------------	---	--	---	--	--	--	--	--	--	--	--	--

MINIMUM BOOM ANGLE (DEGREES) FOR INDICATED BOOM LENGTH (NO LOAD) -2  
 MAXIMUM BOOM LENGTH (FEET) AT -2 DEGREE BOOM ANGLE (NO LOAD) 85

# RATED LIFTING CAPACITIES IN POUNDS

40.5 - 126FT BOOM ON FULLY EXTENDED OUTRIGGERS - OVER SIDE  
 9700 POUND TOTAL COUNTERWEIGHT

38 FT. EXTENSION ERECTED BUT NOT USED  
 LOAD MOMENT DEVICE (LMI) CODE # 411



## POWERED BOOM LENGTH IN FEET

LOAD RADIUS FT.	40.5FT		45FT		55FT		65FT		75FT		85FT		95FT		105FT		115FT		126FT		LOAD RADIUS FT.	
	LOADED BOOM ANGLE X°	LOAD, LB SIDE	LOADED BOOM ANGLE X°	LOAD, LB SIDE	LOADED BOOM ANGLE X°	LOAD, LB SIDE	LOADED BOOM ANGLE X°	LOAD, LB SIDE	LOADED BOOM ANGLE X°	LOAD, LB SIDE	LOADED BOOM ANGLE X°	LOAD, LB SIDE	LOADED BOOM ANGLE X°	LOAD, LB SIDE	LOADED BOOM ANGLE X°	LOAD, LB SIDE	LOADED BOOM ANGLE X°	LOAD, LB SIDE	LOADED BOOM ANGLE X°	LOAD, LB SIDE		
10	68	145500	71	88800	74	85200															10	
12	65	111400	68	91600	72	84900	75	69800														12
15	60	88100	64	87500	69	78600	73	64700	75	54200												15
20	51	65500	56	65400	63	59200	68	56100	71	48500	74	42300	76	36200								20
25	41	51500	48	51300	57	49700	63	46200	67	41900	70	35800	73	32600								25
30	28	40300	38	40800	50	41500	58	37400	63	37900	67	33500	70	29100								30
35			25	30700	43	31300	52	30900	58	29100	63	29400	67	25800								35
40					34	23400	46	23800	54	23500	59	23900	63	23000								40
45					22	18000	39	18300	49	18600	55	18800	60	18500								45
50					31	14300	31	14300	43	14500	50	14700	56	15100								50
55					21	11200	21	11200	37	11400	46	11600	52	11900								55
60									29	8900	40	9100	48	9500								60
65									19	6900	35	7100	43	7400								65
70											28	5400	38	5800								70
75											18	4000	33	4400								75
80													26	3200								80
85																						85
0	19600 (34.0)	0	15200 (38.5)	0	8900 (48.5)	0	5500 (58.5)	0	3100 (68.5)	0	0	0	0	0	0	0	0	0	0	0	0	0

ZERO DEGREE BOOM ANGLE LOADS (LB) / (RADI (FT.))

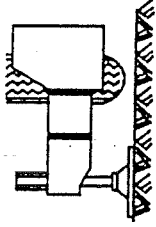
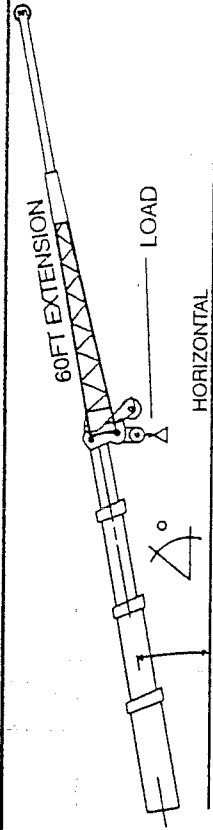
MINIMUM BOOM ANGLE (DEGREES) FOR INDICATED BOOM LENGTH (NO LOAD)	-2
MAXIMUM BOOM LENGTH (FEET) AT -2 DEGREE BOOM ANGLE (NO LOAD)	85



# RATED LIFTING CAPACITIES IN POUNDS

40.5 - 126FT BOOM ON FULLY EXTENDED OUTRIGGERS - OVER REAR  
9700 POUND TOTAL COUNTERWEIGHT

60 FT. EXTENSION ERECTED BUT NOT USED  
LOAD MOMENT DEVICE (LMI) CODE # 414



## POWERED BOOM LENGTH IN FEET

LOAD RADIUS FT.	40.5FT		45FT		55FT		65FT		75FT		85FT		95FT		105FT		115FT		126FT		LOAD RADIUS FT.	
	LOADED BOOM ANGLE X°	LOAD, LB REAR	LOADED BOOM ANGLE X°	LOAD, LB REAR	LOADED BOOM ANGLE X°	LOAD, LB REAR	LOADED BOOM ANGLE X°	LOAD, LB REAR	LOADED BOOM ANGLE X°	LOAD, LB REAR	LOADED BOOM ANGLE X°	LOAD, LB REAR	LOADED BOOM ANGLE X°	LOAD, LB REAR	LOADED BOOM ANGLE X°	LOAD, LB REAR	LOADED BOOM ANGLE X°	LOAD, LB REAR	LOADED BOOM ANGLE X°	LOAD, LB REAR		
10	68	144800	71	85500	74	82900															10	
12	65	110800	68	88300	72	82600	75	68000														12
15	60	87500	64	86900	69	76300	73	63000	75	52700												15
20	51	65000	56	64900	63	56900	68	54400	71	47100	74	41100	76	35600								20
25	41	51100	48	50900	57	47500	63	44500	67	40600	70	34700	73	32100	75	28100						25
30	28	39900	38	40400	50	41200	58	35800	63	36600	67	32400	70	28700	72	24900	74	21800				30
35			25	31800	43	31700	52	29300	58	27900	63	28300	67	25400	70	22100	72	19500	74	17200		35
40					34	24500	46	23700	54	22200	59	23600	63	22600	67	19600	69	17400	72	15400		40
45					22	19600	39	20100	49	18900	55	18700	60	18100	64	17400	67	15500	69	14100		45
50							31	16000	43	16400	51	16600	56	15200	60	14800	64	14400	67	12600		50
55					21	12700			37	13100	46	13400	52	13800	57	13800	61	12800	64	11300		55
60							29	10500	29	10500	41	10800	48	11200	53	11200	58	11300	62	10100		60
65							19	8300	19	8300	35	8600	44	9100	50	9000	55	9200	59	9100		65
70											28	6800	39	7300	46	7200	51	7400	56	7500		70
75											18	5300	33	5800	42	5700	48	5800	53	6000		75
80													27	4500	37	4400	44	4500	50	4700		80
85													18	3400	32	3300	40	3400	47	3500		85

## ZERO DEGREE BOOM ANGLE LOADS (LB) / ( RADII (FT.))

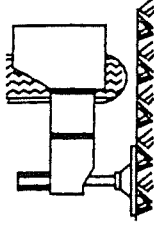
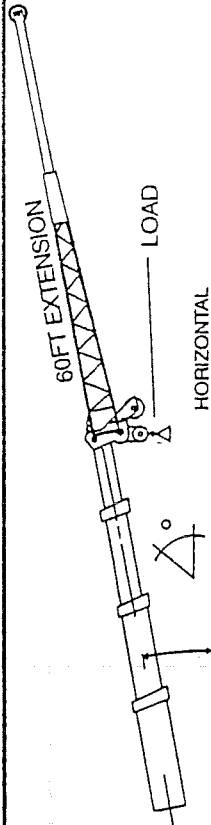
0	19300 (34.0)	0	14900 (38.5)	0	8700 (48.5)	0	5300 (58.5)	0	0 (68.5)	0	0 (78.5)										
---	--------------	---	--------------	---	-------------	---	-------------	---	----------	---	----------	--	--	--	--	--	--	--	--	--	--

MINIMUM BOOM ANGLE (DEGREES) FOR INDICATED BOOM LENGTH (NO LOAD)	-2
MAXIMUM BOOM LENGTH (FEET) AT -2 DEGREE BOOM ANGLE (NO LOAD)	85

# RATED LIFTING CAPACITIES IN POUNDS

40.5 - 126FT BOOM ON FULLY EXTENDED OUTRIGGERS - OVER SIDE  
9700 POUND TOTAL COUNTERWEIGHT

60 FT. EXTENSION ERECTED BUT NOT USED  
LOAD MOMENT DEVICE (LMI) CODE # 414



## POWERED BOOM LENGTH IN FEET

LOAD RADIUS FT.	40.5FT		45FT		55FT		65FT		75FT		85FT		95FT		105FT		115FT		126FT			
	LOADED BOOM ANGLE X°	LOAD, LB	LOADED BOOM ANGLE X°	LOAD, LB	LOADED BOOM ANGLE X°	LOAD, LB	LOADED BOOM ANGLE X°	LOAD, LB	LOADED BOOM ANGLE X°	LOAD, LB	LOADED BOOM ANGLE X°	LOAD, LB	LOADED BOOM ANGLE X°	LOAD, LB	LOADED BOOM ANGLE X°	LOAD, LB	LOADED BOOM ANGLE X°	LOAD, LB	LOADED BOOM ANGLE X°	LOAD, LB	LOAD, LB	
10	68	144800	71	85500	74	82900	0															
12	65	110800	68	88300	72	82600	75	68000														
15	60	87500	64	86900	69	76300	73	63000														
20	51	65000	56	64900	63	56900	68	54400	75	52700	74	41100	76	35600								
25	41	51100	48	50900	57	47500	63	44500	67	40600	70	34700	73	32100	75	28100	77	24600				
30	28	39900	38	40400	50	41200	58	35800	63	36600	67	32400	70	28700	72	24900	74	21800				
35			25	30300	43	31300	52	29300	58	27900	63	28300	67	25400	70	22100	72	19500				
40					34	23300	46	23700	54	22200	59	23600	63	22600	67	19600	69	17400				
45					22	17700	39	18300	49	18700	55	18700	60	18100	64	17400	67	15500				
50							31	14100	43	14500	50	14900	56	15200	60	14800	64	14400				
55							21	10900	37	11300	46	11600	52	12000	57	12100	61	12200				
60									29	8800	40	9100	48	9500	53	9500	58	9700				
65									19	6700	35	7000	43	7400	50	7400	54	7600				
70											28	5300	39	5700	46	5700	51	5900				
75											18	3800	33	4300	41	4300	48	4400				
80													26	3100	37	3000	44	3200				

## ZERO DEGREE BOOM ANGLE LOADS (LB) / (° RADII (FT.))

0	19300	0	14900	0	8700	0	5300	0	0	0	0	0	0	0	0	0	0	0	0	0	0	0	
	(34.0)		(38.5)		(48.5)		(58.5)		(68.5)		(78.5)												

MINIMUM BOOM ANGLE (DEGREES) FOR INDICATED BOOM LENGTH (NO LOAD)

-2

MAXIMUM BOOM LENGTH (FEET) AT -2 DEGREE BOOM ANGLE (NO LOAD)

85